

# DSPP Rabbit pAb

Catalog No.: A25260

## Basic Information

### Observed MW

97kDa,131kDa

### Calculated MW

131kDa

### Category

Primary antibody

### Applications

ELISA,WB,IF/ICC

### Cross-Reactivity

Human

## Background

This gene encodes a member of the small integrin-binding ligand N-linked glycoprotein (SIBLING) family of proteins. The encoded preproprotein is secreted by odontoblasts and proteolytically processed to generate two principal proteins of the dentin extracellular matrix of the tooth, dentin sialoprotein and dentin phosphoprotein. These two protein products may play distinct but related roles in dentin mineralization. Mutations in this gene are associated with dentinogenesis imperfecta and dentin dysplasia. This gene is present in a gene cluster on chromosome 4. Allelic differences due to repeat polymorphisms have been found for this gene.

## Recommended Dilutions

**WB** 1:500 - 1:1000

**IF/ICC** 1:50 - 1:200

## Immunogen Information

### Gene ID

1834

### Swiss Prot

Q9NZW4

### Immunogen

Recombinant Protein corresponding to a sequence within amino acids 16-230 of human DSPP(NP\_055023.2).

### Synonyms

DPP; DSP; DGI1; DMP3; DFNA39; DSPP

## Contact

☎ | 400-999-6126

✉ | [cn.market@abclonal.com.cn](mailto:cn.market@abclonal.com.cn)

🌐 | [www.abclonal.com.cn](http://www.abclonal.com.cn)

## Product Information

### Source

Rabbit

### Isotype

IgG

### Purification

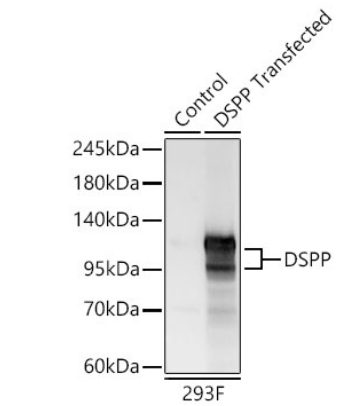
Affinity purification

### Storage

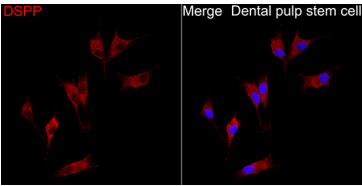
Store at -20°C. Avoid freeze / thaw cycles.

Buffer: PBS with 0.05% proclin300,50% glycerol,pH7.3.

Validation Data



Western blot analysis of lysates from wild type (WT) and 293F cells transfected with DSPP using DSPP Rabbit pAb(A25260) at 1:1000 dilution.  
Secondary antibody:HRP Goat Anti-Rabbit IgG (H+L)(AS014) at 1:10000 dilution.  
Lysates/proteins: 40.5 µg per lane.  
Blocking buffer: 3% nonfat dry milk in TBST.  
Detection:ECL Basic Kit (RM00020).  
Exposure time: 10s.



Immunofluorescence analysis of Dental pulp stem cell using DSPP Rabbit pAb (A25260) at a dilution of 1:100 (40x lens). Secondary antibody: Cy3 Goat Anti-Rabbit IgG (H+L) (AS007) at 1:500 dilution. Blue: DAPI for nuclear staining.