

# ABflo® 488 Rabbit anti-Human CD301/CLEC10A mAb

Catalog No.: A25271

## Basic Information

### Observed MW

Refer to figures

### Calculated MW

28kDa/32kDa/35kDa

### Category

Primary antibody

### Applications

FC

### Cross-Reactivity

Human

### CloneNo number

ARC61381-ABflo488

### Conjugate

ABflo® 488. Ex:491nm. Em:516nm.

## Recommended Dilutions

FC 5 µl per 10<sup>6</sup> cells in  
100 µl volume

## Background

This gene encodes a member of the C-type lectin/C-type lectin-like domain (CTL/CTLD) superfamily. Members of this family share a common protein fold and have diverse functions, such as cell adhesion, cell-cell signalling, glycoprotein turnover, and roles in inflammation and immune response. The encoded type 2 transmembrane protein may function as a cell surface antigen. Two transcript variants encoding distinct isoforms have been identified for this gene.

## Immunogen Information

### Gene ID

10462

### Swiss Prot

Q8IUN9

### Immunogen

Recombinant fusion protein containing a sequence corresponding to amino acids 61-316 of human CD301/CLEC10A (NP\_878910.1).

### Synonyms

HML; MGL; HML2; CD301; CLECSF13; CLECSF14; CD301/CLEC10A

## Contact

 | 400-999-6126

 | [cn.market@abclonal.com.cn](mailto:cn.market@abclonal.com.cn)

 | [www.abclonal.com.cn](http://www.abclonal.com.cn)

## Product Information

### Source

Rabbit

### Isotype

IgG

### Purification

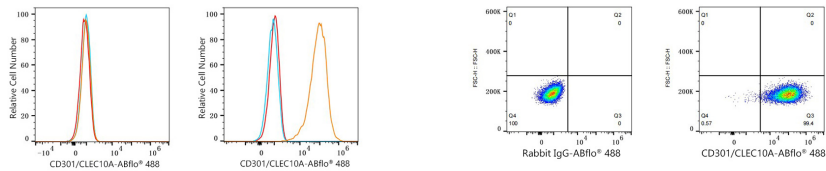
Affinity purification

### Storage

Store at 2-8°C. Avoid freeze.

Buffer: PBS with 0.03% proclin300,0.2% BSA,pH7.3.

## Validation Data



Flow cytometry: 1X10<sup>6</sup> 293F cells (negative control, left) and 293F (Transfection, right) cells were surface-stained with ABflo® 488 Rabbit anti-Human CD301/CLEC10A mAb (A25271,5 µl/Test, orange line) or ABflo® 488 Rabbit IgG isotype control (A22069,5 µl/Test, blue line). Non-fluorescently stained cells were used as blank control (red line).

Flow cytometry: 1X10<sup>6</sup> 293F (Transfection) cells were surface-stained with ABflo® 488 Rabbit IgG isotype control (A22069,5 µl/Test, left) or ABflo® 488 Rabbit anti-Human CD301/CLEC10A mAb (A25271,5 µl/Test, right).