

ABflo® 647 Rabbit anti-Human CD301/CLEC10A mAb

Catalog No.: A25272

Basic Information

Observed MW

Refer to figures

Calculated MW

28kDa/32kDa/35kDa

Category

Primary antibody

Applications

FC

Cross-Reactivity

Human

CloneNo number

ARC61381

Conjugate

ABflo® 647. Ex:648nm. Em:664nm.

Recommended Dilutions

FC 5 µl per 10⁶ cells in
100 µl volume

Background

This gene encodes a member of the C-type lectin/C-type lectin-like domain (CTL/CTLD) superfamily. Members of this family share a common protein fold and have diverse functions, such as cell adhesion, cell-cell signalling, glycoprotein turnover, and roles in inflammation and immune response. The encoded type 2 transmembrane protein may function as a cell surface antigen. Two transcript variants encoding distinct isoforms have been identified for this gene.

Immunogen Information

Gene ID

10462

Swiss Prot

Q8IUN9

Immunogen

Recombinant protein (or fragment). This information is considered to be commercially sensitive.

Synonyms

HML; MGL; HML2; CD301; CLECSF13; CLECSF14; CD301/CLEC10A

Contact

 | 400-999-6126

 | cn.market@abclonal.com.cn

 | www.abclonal.com.cn

Product Information

Source

Rabbit

Isotype

IgG

Purification

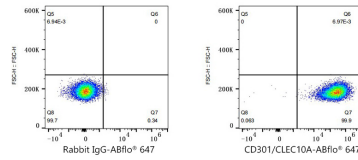
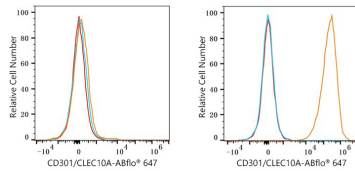
Affinity purification

Storage

Store at 2-8°C. Avoid freeze.

Buffer: PBS containing 0.2% BSA, preserved with proclin300 or sodium azide (as specified on the Certificate of Analysis), pH 7.3.

Validation Data



Flow cytometry: 1×10^6 293F cells (negative control, left) and 293F (Transfection, right) cells were surface-stained with ABflo® 647 Rabbit anti-Human CD301/CLEC10A mAb (A25272,5 μ l/Test, orange line) or ABflo® 647 Rabbit IgG isotype control (A22070,5 μ l/Test, blue line). Non-fluorescently stained cells were used as blank control (red line).

Flow cytometry: 1×10^6 293F (Transfection) cells were surface-stained with ABflo® 647 Rabbit IgG isotype control (A22070,5 μ l/Test, left) or ABflo® 647 Rabbit anti-Human CD301/CLEC10A mAb (A25272,5 μ l/Test, right).