

ABflo® 594 Rabbit anti-Human CD301/CLEC10A mAb

Catalog No.: A25273

Basic Information

Observed MW

Refer to figures

Calculated MW

28kDa/32kDa/35kDa

Category

Primary antibody

Applications

FC

Cross-Reactivity

Human

CloneNo number

ARC61381-ABflo594

Conjugate

ABflo® 594. Ex:588nm. Em:604nm.

Recommended Dilutions

FC 5 µl per 10⁶ cells in
100 µl volume

Background

This gene encodes a member of the C-type lectin/C-type lectin-like domain (CTL/CTLD) superfamily. Members of this family share a common protein fold and have diverse functions, such as cell adhesion, cell-cell signalling, glycoprotein turnover, and roles in inflammation and immune response. The encoded type 2 transmembrane protein may function as a cell surface antigen. Two transcript variants encoding distinct isoforms have been identified for this gene.

Immunogen Information

Gene ID

10462

Swiss Prot

Q8IUN9

Immunogen

Recombinant fusion protein containing a sequence corresponding to amino acids 61-316 of human CD301/CLEC10A (NP_878910.1).

Synonyms

HML; MGL; HML2; CD301; CLECSF13; CLECSF14; CD301/CLEC10A

Contact

☎ | 400-999-6126

✉ | cn.market@abclonal.com.cn

🌐 | www.abclonal.com.cn

Product Information

Source

Rabbit

Isotype

IgG

Purification

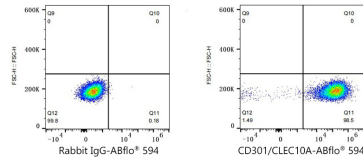
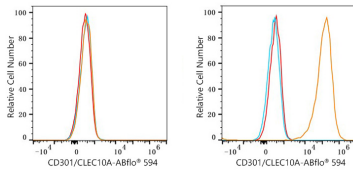
Affinity purification

Storage

Store at 2-8°C. Avoid freeze.

Buffer: PBS with 0.03% proclin300,0.2% BSA,pH7.3.

Validation Data



Flow cytometry: 1X10⁶ 293F cells (negative control, left) and 293F (Transfection, right) cells were surface-stained with ABflo® 594 Rabbit anti-Human CD301/CLEC10A mAb (A25273,5 µl/Test, orange line) or ABflo® 594 Rabbit IgG isotype control (A23821,5 µl/Test, blue line). Non-fluorescently stained cells were used as blank control (red line).

Flow cytometry: 1X10⁶ 293F (Transfection) cells were surface-stained with ABflo® 594 Rabbit IgG isotype control (A23821,5 µl/Test, left) or ABflo® 594 Rabbit anti-Human CD301/CLEC10A mAb (A25273,5 µl/Test, right).