

ABflo® 594 Rabbit anti-Human CD273/PD-L2 mAb

Catalog No.: A25275

Basic Information

Observed MW

Calculated MW

21kDa/31kDa

Category

Primary antibody

Applications

FC

Cross-Reactivity

Human

CloneNo number

ARC65812-ABflo594

Conjugate

ABflo® 594. Ex:588nm. Em:604nm.

Background

Involved in negative regulation of activated T cell proliferation; negative regulation of interferon-gamma production; and negative regulation of interleukin-10 production. Predicted to be located in plasma membrane. Predicted to be active in external side of plasma membrane. Biomarker of pulmonary tuberculosis.

Recommended Dilutions

FC 5 µl per 10⁶ cells in
100 µl volume

Immunogen Information

Gene ID

80380

Swiss Prot

Q9BQ51

Immunogen

Recombinant fusion protein containing a sequence corresponding to amino acids 20-219 of human CD273/PD-L2 (NP_079515.2).

Synonyms

B7DC; Btdc; PDL2; CD273; PD-L2; PDCD1L2; bA574F11.2; PDCD1LG2

Contact

☎ | 400-999-6126

✉ | cn.market@abclonal.com.cn

🌐 | www.abclonal.com.cn

Product Information

Source

Rabbit

Isotype

IgG

Purification

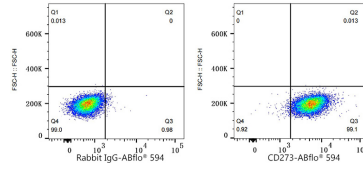
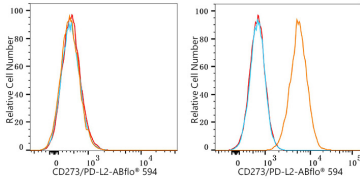
Affinity purification

Storage

Store at 2-8°C. Avoid freeze.

Buffer: PBS with 0.03% proclin300,0.2% BSA,pH7.3.

Validation Data



Flow cytometry: 1×10^6 Jurkat cells (negative control, left) and KARPAS 299 cells (right) were surface-stained with ABflo® 594 Rabbit anti-Human CD273/PD-L2 mAb (A25275, 5 μ l/Test, orange line) or ABflo® 594 Rabbit IgG isotype control (A23821, 5 μ l/Test, blue line). Non-fluorescently stained cells were used as blank control (red line).

Flow cytometry: 1×10^6 KARPAS 299 cells were surface-stained with ABflo® 594 Rabbit IgG isotype control (A23821, 5 μ l/Test, left) or ABflo® 594 Rabbit anti-Human CD273/PD-L2 mAb (A25275, 5 μ l/Test, right).