

CCL3 Rabbit pAb

Catalog No.: A25292

Basic Information

Observed MW

11kDa

Calculated MW

10kDa

Category

Primary antibody

Applications

WB,ELISA

Cross-Reactivity

Human

Background

This locus represents a small inducible cytokine. The encoded protein, also known as macrophage inflammatory protein 1 alpha, plays a role in inflammatory responses through binding to the receptors CCR1, CCR4 and CCR5. Polymorphisms at this locus may be associated with both resistance and susceptibility to infection by human immunodeficiency virus type 1.

Recommended Dilutions

WB 1:500 - 1:1000

ELISA Recommended starting concentration is 1 µg/mL. Please optimize the concentration based on your specific assay requirements.

Immunogen Information

Gene ID

6348

Swiss Prot

P10147

Immunogen

Recombinant fusion protein containing a sequence corresponding to amino acids 23-92 of human CCL3(NP_002974.1).

Synonyms

MIP1A; SCYA3; G0S19-1; LD78ALPHA; MIP-1-alpha; CCL3

Contact

☎ | 400-999-6126

✉ | cn.market@abclonal.com.cn

🌐 | www.abclonal.com.cn

Product Information

Source

Rabbit

Isotype

IgG

Purification

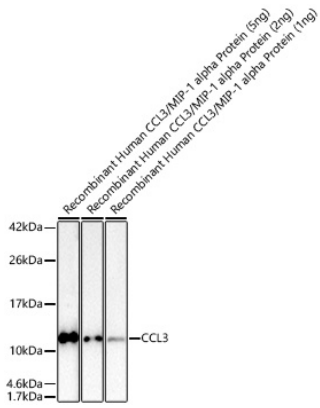
Affinity purification

Storage

Store at -20°C. Avoid freeze / thaw cycles.

Buffer: PBS with 0.05% proclin300,50% glycerol,pH7.3.

Validation Data



Western blot analysis of Recombinant Human CCL3/MIP-1 alpha Protein (RP01628) using CCL3 Rabbit pAb (A25292) at 1:1000 dilution.

Secondary antibody: HRP-conjugated Goat anti-Rabbit IgG (H+L) (AS014) at 1:10000 dilution.

Lysates/proteins: 5 ng/2ng/1ng per lane.

Blocking buffer: 3% nonfat dry milk in TBST.

Detection: ECL Basic Kit (RM00020).

Exposure time: 10s.