

# PMS2 Rabbit mAb

Catalog No.: A25294 **Recombinant**

## Basic Information

### Observed MW

120kDa

### Calculated MW

96kDa

### Category

Primary antibody

### Applications

WB,IF/ICC,IP,ELISA

### Cross-Reactivity

Human

### CloneNo number

ARC3228

## Background

The protein encoded by this gene is a key component of the mismatch repair system that functions to correct DNA mismatches and small insertions and deletions that can occur during DNA replication and homologous recombination. This protein forms heterodimers with the gene product of the mutL homolog 1 (MLH1) gene to form the MutL-alpha heterodimer. The MutL-alpha heterodimer possesses an endonucleolytic activity that is activated following recognition of mismatches and insertion/deletion loops by the MutS-alpha and MutS-beta heterodimers, and is necessary for removal of the mismatched DNA. There is a DQHA(X)2E(X)4E motif found at the C-terminus of the protein encoded by this gene that forms part of the active site of the nuclease. Mutations in this gene have been associated with hereditary nonpolyposis colorectal cancer (HNPCC; also known as Lynch syndrome) and Turcot syndrome.

## Recommended Dilutions

**WB** 1:5000 - 1:10000

**IF/ICC** 1:50 - 1:200

**IP** 2µg-10µg antibody for  
400µg-600µg extracts of  
whole cells

**ELISA** Recommended starting  
concentration is 1 µg/mL.  
Please optimize the  
concentration based on  
your specific assay  
requirements.

## Contact

 | 400-999-6126

 | [cn.market@abclonal.com.cn](mailto:cn.market@abclonal.com.cn)

 | [www.abclonal.com.cn](http://www.abclonal.com.cn)

## Immunogen Information

### Gene ID

5395

### Swiss Prot

P54278

### Immunogen

Synthetic peptide

### Synonyms

MLH4; PMS-2; PMSL2; HNPCC4; LYNCH4; MMRC4; PMS2CL; PMS2

## Product Information

### Source

Rabbit

### Isotype

IgG

### Purification

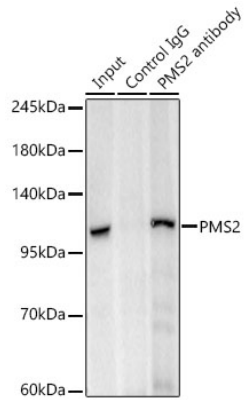
Affinity purification

### Storage

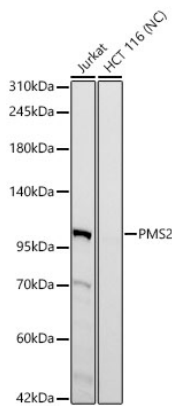
Store at -20°C. Avoid freeze / thaw cycles.

Buffer: PBS with 0.05% proclin300,0.05% BSA,50% glycerol,pH7.3.

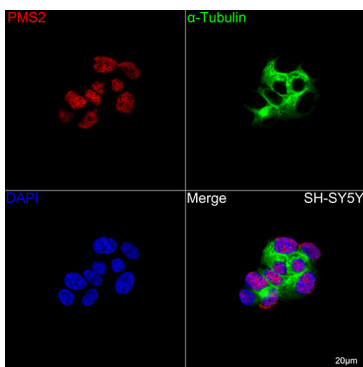
## Validation Data



Immunoprecipitation of PMS2 in 500  $\mu$ g extracts from HeLa cells using 10  $\mu$ g PMS2 Rabbit mAb (A25294). Western blot analysis was performed using PMS2 Rabbit mAb (A25294) at 1:10000 dilution.



Western blot analysis of various lysates using PMS2 Rabbit mAb (A25294) at 1:10000 dilution. Secondary antibody: HRP-conjugated Goat anti-Rabbit IgG (H+L) (AS014) at 1:10000 dilution. Lysates/proteins: 25  $\mu$ g per lane. Blocking buffer: 3% nonfat dry milk in TBST. Detection: ECL Basic Kit (RM00020). Negative control (NC): HCT 116. Exposure time: 90s.



Confocal imaging of SH-SY5Y cells using PMS2 Rabbit mAb (A25294, dilution 1:200) followed by a further incubation with Cy3 Goat Anti-Rabbit IgG (H+L) (AS007, dilution 1:500) (Red). The cells were counterstained with  $\alpha$ -Tubulin Mouse mAb (AC012, dilution 1:400) followed by incubation with ABflo® 488-conjugated Goat Anti-Mouse IgG (H+L) Ab (AS076, dilution 1:500) (Green). DAPI was used for nuclear staining (Blue). Objective: 100x.