

# pro Caspase-1 + p10 + p12 Rabbit mAb

Catalog No.: A25308

Recombinant

1 Publications

## Basic Information

### Observed MW

12kDa/30-45kDa

### Calculated MW

45kDa

### Category

Primary antibody

### Applications

ELISA, WB, IP

### Cross-Reactivity

Human, Mouse, Rat

### CloneNo number

ARC3243

## Background

This gene encodes a protein which is a member of the cysteine-aspartic acid protease (caspase) family. Sequential activation of caspases plays a central role in the execution-phase of cell apoptosis. Caspases exist as inactive proenzymes which undergo proteolytic processing at conserved aspartic residues to produce 2 subunits, large and small, that dimerize to form the active enzyme. This gene was identified by its ability to proteolytically cleave and activate the inactive precursor of interleukin-1, a cytokine involved in the processes such as inflammation, septic shock, and wound healing. This gene has been shown to induce cell apoptosis and may function in various developmental stages. Studies of a similar gene in mouse suggest a role in the pathogenesis of Huntington disease. Alternative splicing results in transcript variants encoding distinct isoforms.

## Recommended Dilutions

WB 1:500 - 1:2000

IP 0.5µg-4µg antibody for  
200µg-400µg extracts of  
whole cells

## Immunogen Information

### Gene ID

834

### Swiss Prot

P29466

### Immunogen

Recombinant protein

### Synonyms

ICE; P45; IL1BC; Cleaved-Caspase-1

## Contact

 | 400-999-6126 | [cn.market@abclonal.com.cn](mailto:cn.market@abclonal.com.cn) | [www.abclonal.com.cn](http://www.abclonal.com.cn)

## Product Information

### Source

Rabbit

### Isotype

IgG

### Purification

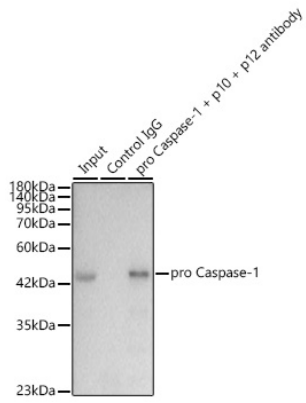
Affinity purification

### Storage

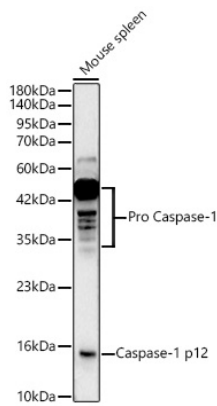
Store at -20°C. Avoid freeze / thaw cycles.

Buffer: PBS with 0.05% proclin300, 0.05% BSA, 50% glycerol, pH7.3.

## Validation Data



Immunoprecipitation of pro Caspase-1 in 300 µg extracts from RAW 264.7 cells using 3 µg pro Caspase-1 + p10 + p12 Rabbit mAb (A25308). Western blot analysis was performed using pro Caspase-1 + p10 + p12 Rabbit mAb (A25308) at 1:1000 dilution.



Western blot analysis of lysates from Mouse spleen using pro Caspase-1 + p10 + p12 Rabbit mAb (A25308) at 1:2000 dilution.

Secondary antibody: HRP-conjugated Goat anti-Rabbit IgG (H+L) (AS014) at 1:10000 dilution.

Lysates/proteins: 25 µg per lane.

Blocking buffer: 3% nonfat dry milk in TBST.

Detection: ECL Basic Kit (RM00020).

Exposure time:90s.