

OCT4 Rabbit mAb

Catalog No.: A25315 **Recombinant**

Basic Information

Observed MW

39 kDa/45 kDa

Calculated MW

39 kDa

Category

Primary antibody

Applications

WB, IP, IF/ICC, IF-P, IHC-P, ChIP, ELISA

Cross-Reactivity

Human, Mouse

CloneNo number

ARC3250

Background

This gene encodes a transcription factor containing a POU homeodomain that plays a key role in embryonic development and stem cell pluripotency. Aberrant expression of this gene in adult tissues is associated with tumorigenesis. This gene can participate in a translocation with the Ewing's sarcoma gene on chromosome 21, which also leads to tumor formation. Alternative splicing, as well as usage of alternative AUG and non-AUG translation initiation codons, results in multiple isoforms. One of the AUG start codons is polymorphic in human populations. Related pseudogenes have been identified on chromosomes 1, 3, 8, 10, and 12.

Recommended Dilutions

WB	1:3000 - 1:15000
IP	0.5 µg -4 µg antibody for 400 µg - 600 µg extracts of whole cells
IF/ICC	1:200 - 1:800
IF-P	1:200 - 1:800
IHC-P	1:1000 - 1:4000
ChIP	5 µg antibody for 10 µg - 15 µg of Chromatin
ELISA	Recommended starting concentration is 1 µg/mL. Please optimize the concentration based on your specific assay requirements.

Immunogen Information

Gene ID

5460

Swiss Prot

Q01860

Immunogen

Synthetic peptide. This information is considered to be commercially sensitive.

Synonyms

OCT3; OCT4; OTF3; OTF4; OTF-3; Oct-3; Oct-4; Oct3/4

Product Information

Source

Rabbit

Isotype

IgG

Purification

Affinity purification

Storage

Store at -20°C. Avoid freeze / thaw cycles.

Buffer: PBS containing 50% glycerol and 0.05% BSA, preserved with proclin300 or sodium azide (as specified on the Certificate of Analysis), pH 7.3.

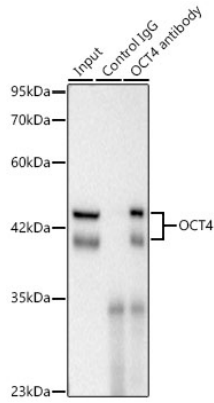
Contact

 | 400-999-6126

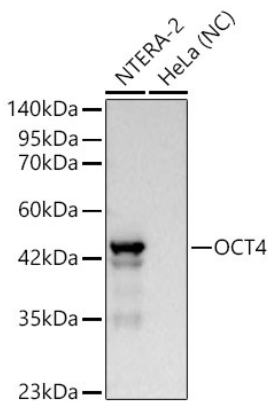
 | cn.market@abclonal.com.cn

 | www.abclonal.com.cn

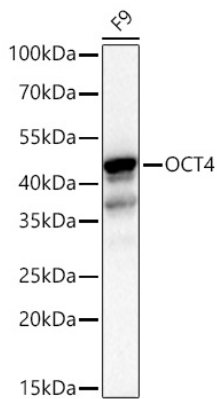
Validation Data



Immunoprecipitation of OCT4 in 500 µg extracts from NCCIT cells using 3 µg OCT4 Rabbit mAb (A25315). Western blot analysis was performed using OCT4 Rabbit mAb (A25315) at 1:2000 dilution.

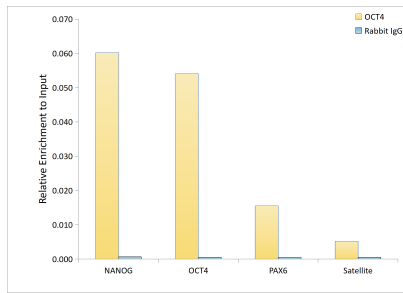


Western blot analysis of various lysates using OCT4 Rabbit mAb (A25315) at 1:6000 dilution. Secondary antibody: HRP-conjugated Goat anti-Rabbit IgG (H+L) (AS014) at 1:10000 dilution. Lysates/proteins: 25 µg per lane. Blocking buffer: 3% nonfat dry milk in TBST. Detection: ECL Basic Kit (RM00020). Negative control (NC): HeLa. Exposure time: 10s.

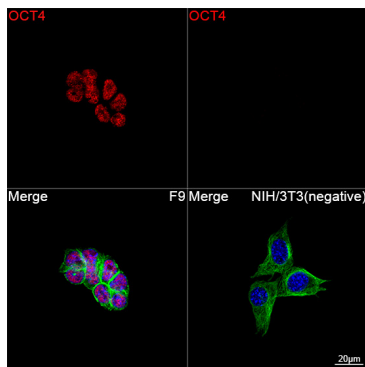


Western blot analysis of lysates from F9 cells using OCT4 Rabbit mAb (A25315) at 1:5000 dilution incubated overnight at 4°C. Secondary antibody: HRP-conjugated Goat anti-Rabbit IgG (H+L) (AS014) at 1:10000 dilution. Lysates/proteins: 25 µg per lane. Blocking buffer: 3% nonfat dry milk in TBST. Detection: ECL Basic Kit (RM00020). Exposure time: 1 s.

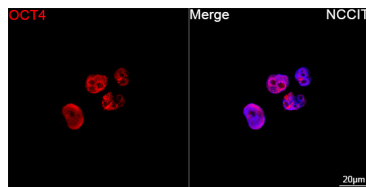
Validation Data



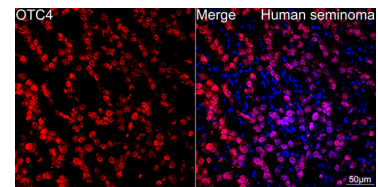
Chromatin immunoprecipitation was performed with 15ug μ g of cross-linked chromatin from NCCIT cells, using 5ug μ g of OCT4 Rabbit mAb (A25315) and Rabbit IgG isotype control (AC042). The enrichment of immunoprecipitated DNA at different genomic loci was examined by quantitative PCR. The histogram compares the ratio of the immunoprecipitated DNA to the input at given loci.



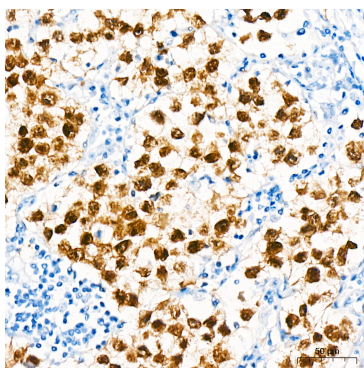
Confocal imaging of F9 cells and NIH/3T3 cells (negative) using OCT4 Rabbit mAb (A25315, dilution 1:200) followed by a further incubation with Cy3-conjugated Goat anti-Rabbit IgG (H+L) (AS007, dilution 1:500) (Red). The cells were counterstained with α -Tubulin Mouse mAb (AC012, dilution 1:400) followed by incubation with ABflo® 488-conjugated Goat Anti-Mouse IgG (H+L) Ab (AS076, dilution 1:500) (Green). DAPI was used for nuclear staining (Blue). Objective: 100x.



Confocal imaging of NCCIT cells using OCT4 Rabbit mAb (A25315, dilution 1:200) followed by a further incubation with Cy3-conjugated Goat anti-Rabbit IgG (H+L) (AS007, dilution 1:500) (Red). DAPI was used for nuclear staining (Blue). Objective: 100x.



Confocal imaging of paraffin-embedded Human seminoma tissue using OCT4 Rabbit mAb (A25315, dilution 1:200) followed by a further incubation with Cy3 Goat Anti-Rabbit IgG (H+L) (AS007, dilution 1:500) (Red). DAPI was used for nuclear staining (Blue). Objective: 40x. Perform high pressure antigen retrieval with 0.01 M citrate buffer (pH 6.0) prior to IF staining.



Immunohistochemistry analysis of paraffin-embedded Human seminoma tissue using OCT4 Rabbit mAb (A25315) at a dilution of 1:1000 (40x lens). High pressure antigen retrieval was performed with 0.01 M citrate buffer (pH 6.0) prior to IHC staining.