

ABflo® 488 Rabbit anti-Human CD61 mAb

Catalog No.: A25337

Basic Information

Observed MW

Calculated MW

Category

Primary antibody

Applications

FC

Cross-Reactivity

Human

CloneNo number

ARC66474-ABflo488

Conjugate

ABflo® 488. Ex:491nm. Em:516nm.

Background

The ITGB3 protein product is the integrin beta chain beta 3. Integrins are integral cell-surface proteins composed of an alpha chain and a beta chain. A given chain may combine with multiple partners resulting in different integrins. Integrin beta 3 is found along with the alpha IIb chain in platelets. Integrins are known to participate in cell adhesion as well as cell-surface mediated signalling.

Recommended Dilutions

FC 5 µl per 10⁶ cells in
100 µl volume

Immunogen Information

Gene ID

3690

Swiss Prot

P05106

Immunogen

Recombinant fusion protein containing a sequence corresponding to amino acids 21-718 of human CD61 (NP_000203.2).

Synonyms

GT; GT2; CD61; GP3A; BDPLT2; GPIIIa; BDPLT16; BDPLT24

Contact

☎ | 400-999-6126

✉ | cn.market@abclonal.com.cn

🌐 | www.abclonal.com.cn

Product Information

Source

Rabbit

Isotype

IgG

Purification

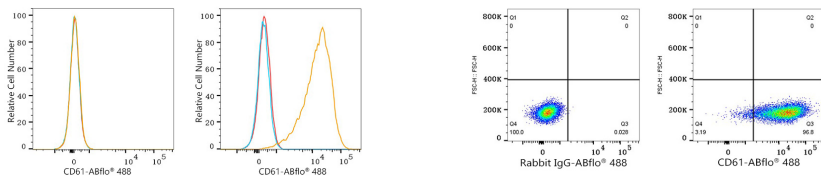
Affinity purification

Storage

Store at 2-8°C. Avoid freeze.

Buffer: PBS with 0.03% proclin300,0.2% BSA,pH7.3.

Validation Data



Flow cytometry: 1×10^6 U-937 cells (negative control, left) and HEL cells (right) were surface-stained with ABflo® 488 Rabbit anti-Human CD61 mAb (A25337, 5 μ l/Test, orange line) or ABflo® 488 Rabbit IgG isotype control (A22069, 5 μ l/Test, blue line). Non-fluorescently stained cells were used as blank control (red line).

Flow cytometry: 1×10^6 HEL cells were surface-stained with ABflo® 488 Rabbit IgG isotype control (A22069, 5 μ l/Test, left) or ABflo® 488 Rabbit anti-Human CD61 mAb (A25337, 5 μ l/Test, right).