

CD326/EpCAM Rabbit mAb

Catalog No.: A25344 **Recombinant**

Basic Information

Observed MW

35-40kDa

Calculated MW

35kDa

Category

Primary antibody

Applications

ELISA, WB, IHC-P, IF/ICC, FC

Cross-Reactivity

Human, Mouse

CloneNo number

ARC65853

Background

Predicted to enable cadherin binding activity involved in cell-cell adhesion. Acts upstream of or within ureteric bud development. Located in cell surface. Is expressed in several structures, including alimentary system; central nervous system; genitourinary system; respiratory system; and sensory organ. Used to study congenital diarrhea 5 with tufting enteropathy. Human ortholog(s) of this gene implicated in congenital diarrhea 5 with tufting enteropathy and hereditary nonpolyposis colorectal cancer type 8. Orthologous to human EPCAM (epithelial cell adhesion molecule).

Recommended Dilutions

WB	1:1000 - 1:5000
IHC-P	1:500 - 1:1000
IF/ICC	1:50 - 1:200
FC	1:500 - 1:1000

Immunogen Information

Gene ID

17075

Swiss Prot

Q99JW5

Immunogen

Recombinant fusion protein containing a sequence corresponding to amino acids 24-266 of mouse CD326/EpCAM (NP_032558.2).

Synonyms

EGP; Ly74; gp40; CD326; EGP-2; TROP1; Egp314; Ep-CAM; EpCAM1; Tacsd1; GA733-2; Tacstd1

Contact

	400-999-6126
	cn.market@abclonal.com.cn
	www.abclonal.com.cn

Product Information

Source

Rabbit

Isotype

IgG

Purification

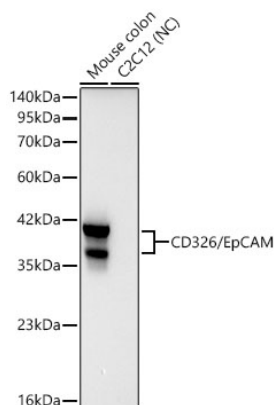
Affinity purification

Storage

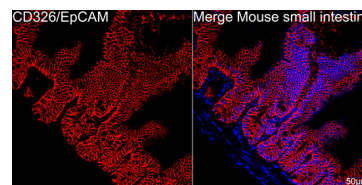
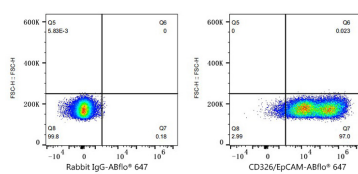
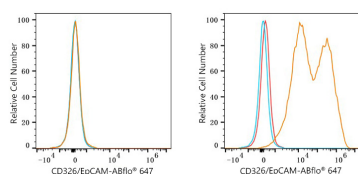
Store at -20°C. Avoid freeze / thaw cycles.

Buffer: PBS with 0.05% proclin300, 0.05% BSA, 50% glycerol, pH7.3.

Validation Data



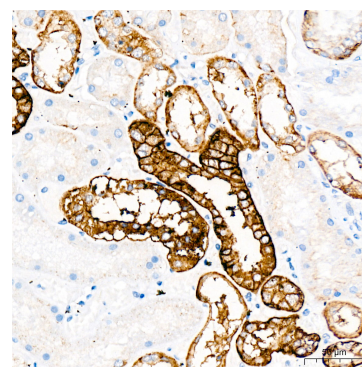
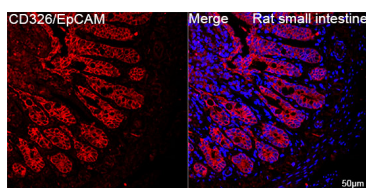
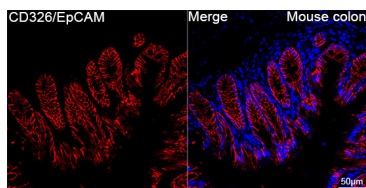
Western blot analysis of various lysates using CD326/EpCAM Rabbit mAb (A25344) at 1:3000 dilution. Secondary antibody: HRP Goat Anti-Rabbit IgG (H+L) (AS014) at 1:10000 dilution. Lysates/proteins: 25 µg per lane. Blocking buffer: 3% nonfat dry milk in TBST. Detection: ECL Basic Kit (RM00020). Negative control (NC): C2C12. Exposure time: 20s.



Flow cytometry: 1×10^6 293T cells (negative control, left) and 293T (Transfection, right) cells were surface-stained with CD326/EpCAM Rabbit mAb (A25344, 2 µg/mL, orange line) or ABflo® 647 Rabbit IgG isotype control (A22070, 5 µL/Test, blue line), followed by Alexa Fluor® 647 conjugated goat anti-rabbit pAb staining. Non-fluorescently stained cells were used as blank control (red line).

Flow cytometry: 1×10^6 293T (Transfection) cells were surface-stained with ABflo® 647 Rabbit IgG isotype control (A22070, 5 µL/Test, left) or CD326/EpCAM Rabbit mAb (A25344, 2 µg/mL, right).

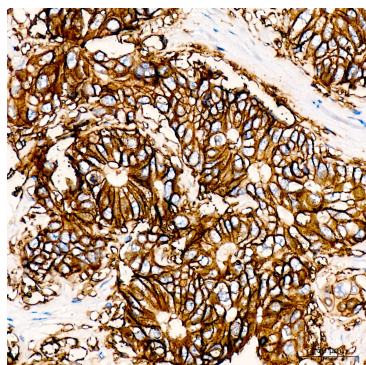
Confocal imaging of paraffin-embedded Mouse small intestine tissue using CD326/EpCAM Rabbit mAb (A25344, dilution 1:200) followed by a further incubation with Cy3 Goat Anti-Rabbit IgG (H+L) (AS007, dilution 1:500) (Red). DAPI was used for nuclear staining (Blue). Perform high pressure antigen retrieval with 0.01 M citrate buffer (pH 6.0) prior to IF staining. Objective: 40x.



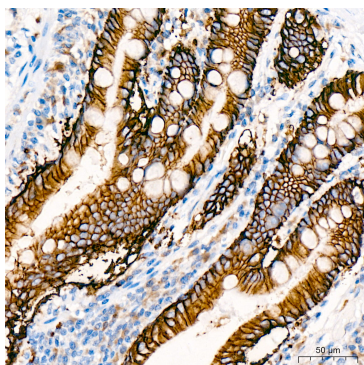
Confocal imaging of paraffin-embedded Mouse colon tissue using CD326/EpCAM Rabbit mAb (A25344, dilution 1:200) followed by a further incubation with Cy3 Goat Anti-Rabbit IgG (H+L) (AS007, dilution 1:500) (Red). DAPI was used for nuclear staining (Blue). High pressure antigen retrieval performed with 0.01M Citrate Buffer (pH 6.0) prior to IF staining. Objective: 40x.

Confocal imaging of paraffin-embedded Rat small intestine tissue using CD326/EpCAM Rabbit mAb (A25344, dilution 1:200) followed by a further incubation with Cy3 Goat Anti-Rabbit IgG (H+L) (AS007, dilution 1:500) (Red). DAPI was used for nuclear staining (Blue). High pressure antigen retrieval performed with 0.01M Citrate Buffer (pH 6.0) prior to IF staining. Objective: 40x.

Immunohistochemistry analysis of CD326/EpCAM in paraffin-embedded Human kidney tissue using CD326/EpCAM Rabbit mAb (A25344) at a dilution of 1:1000 (40x lens). High pressure antigen retrieval was performed with 0.01 M citrate buffer (pH 6.0) prior to IHC staining.



Immunohistochemistry analysis of CD326/EpCAM in paraffin-embedded Human colon carcinoma tissue using CD326/EpCAM Rabbit mAb (A25344) at a dilution of 1:1000 (40x lens). High pressure antigen retrieval was performed with 0.01 M citrate buffer (pH 6.0) prior to IHC staining.



Immunohistochemistry analysis of CD326/EpCAM in paraffin-embedded Human small intestine tissue using CD326/EpCAM Rabbit mAb (A25344) at a dilution of 1:1000 (40x lens). High pressure antigen retrieval was performed with 0.01 M citrate buffer (pH 6.0) prior to IHC staining.