

ABflo® 488 Rabbit anti-Mouse CD326/EpCAM mAb

Catalog No.: A25345

Basic Information

Observed MW

Calculated MW

35kDa

Category

Primary antibody

Applications

IF/ICC,FC

Cross-Reactivity

Mouse

CloneNo number

ARC65853-ABflo488

Conjugate

ABflo® 488. Ex:491nm. Em:516nm.

Recommended Dilutions

IF/ICC 1:50 - 1:200

FC 5 µl per 10⁶ cells in
100 µl volume

Background

Predicted to enable cadherin binding activity involved in cell-cell adhesion. Acts upstream of or within ureteric bud development. Located in cell surface. Is expressed in several structures, including alimentary system; central nervous system; genitourinary system; respiratory system; and sensory organ. Used to study congenital diarrhea 5 with tufting enteropathy. Human ortholog(s) of this gene implicated in congenital diarrhea 5 with tufting enteropathy and hereditary nonpolyposis colorectal cancer type 8. Orthologous to human EPCAM (epithelial cell adhesion molecule).

Immunogen Information

Gene ID

17075

Swiss Prot

Q99JW5

Immunogen

Recombinant fusion protein containing a sequence corresponding to amino acids 24-266 of mouse CD326/EpCAM (NP_032558.2).

Synonyms

EGP; Ly74; gp40; CD326; EGP-2; TROP1; Egp314; Ep-CAM; EpCAM1; Tacsd1; GA733-2; Tacstd1

Contact

☎ | 400-999-6126

✉ | cn.market@abclonal.com.cn

🌐 | www.abclonal.com.cn

Product Information

Source

Rabbit

Isotype

IgG

Purification

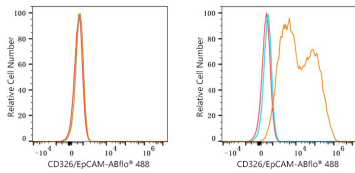
Affinity purification

Storage

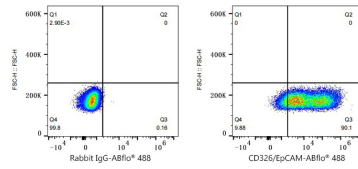
Store at 2-8°C. Avoid freeze.

Buffer: PBS with 0.03% proclin300,0.2% BSA,pH7.3.

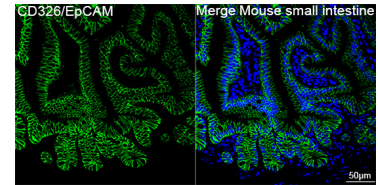
Validation Data



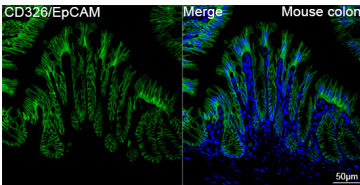
Flow cytometry: 1×10^6 293T cells (negative control, left) and 293T (Transfection, right) cells were surface-stained with ABflo® 488 Rabbit anti-Mouse CD326/EpCAM mAb (A25345, 5 μ l/Test, orange line) or ABflo® 488 Rabbit IgG isotype control (A22069, 5 μ l/Test, blue line). Non-fluorescently stained cells were used as blank control (red line).



Flow cytometry: 1×10^6 293T (Transfection) cells were surface-stained with ABflo® 488 Rabbit IgG isotype control (A22069, 5 μ l/Test, left) or ABflo® 488 Rabbit anti-Mouse CD326/EpCAM mAb (A25345, 5 μ l/Test, right).



Confocal imaging of paraffin-embedded Mouse small intestine tissue using ABflo® 488 Rabbit anti-Mouse CD326/EpCAM mAb (A25345, dilution 1:100). DAPI was used for nuclear staining (Blue). High pressure antigen retrieval performed with 0.01M Citrate Buffer (pH 6.0) prior to IF staining. Objective: 40x.



Confocal imaging of paraffin-embedded Mouse colon tissue using ABflo® 488 Rabbit anti-Mouse CD326/EpCAM mAb (A25345, dilution 1:100). DAPI was used for nuclear staining (Blue). High pressure antigen retrieval performed with 0.01M Citrate Buffer (pH 6.0) prior to IF staining. Objective: 40x.