

# ABflo® 594 Rabbit anti-Mouse CD326/EpCAM mAb

Catalog No.: A25347

## Basic Information

### Observed MW

### Calculated MW

35kDa

### Category

Primary antibody

### Applications

IF/ICC,FC

### Cross-Reactivity

Mouse, Rat

### CloneNo number

ARC65853-ABflo594

### Conjugate

ABflo® 594. Ex:588nm. Em:604nm.

## Recommended Dilutions

IF/ICC	1:50 - 1:200
FC	5 µl per 10 <sup>6</sup> cells in 100 µl volume

## Contact

☎	400-999-6126
✉	cn.market@abclonal.com.cn
🌐	www.abclonal.com.cn

## Background

Predicted to enable cadherin binding activity involved in cell-cell adhesion. Acts upstream of or within ureteric bud development. Located in cell surface. Is expressed in several structures, including alimentary system; central nervous system; genitourinary system; respiratory system; and sensory organ. Used to study congenital diarrhea 5 with tufting enteropathy. Human ortholog(s) of this gene implicated in congenital diarrhea 5 with tufting enteropathy and hereditary nonpolyposis colorectal cancer type 8. Orthologous to human EPCAM (epithelial cell adhesion molecule).

## Immunogen Information

### Gene ID

17075

### Swiss Prot

Q99JW5

### Immunogen

Recombinant fusion protein containing a sequence corresponding to amino acids 24-266 of mouse CD326/EpCAM (NP\_032558.2).

### Synonyms

EGP; Ly74; gp40; CD326; EGP-2; TROP1; Egp314; Ep-CAM; EpCAM1; Tacsd1; GA733-2; Tacstd1

## Product Information

### Source

Rabbit

### Isotype

IgG

### Purification

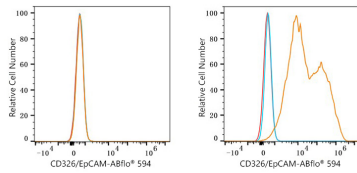
Affinity purification

### Storage

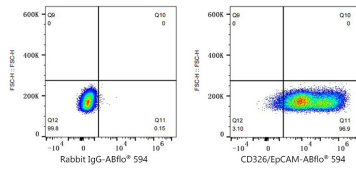
Store at 2-8°C. Avoid freeze.

Buffer: PBS with 0.03% proclin300,0.2% BSA,pH7.3.

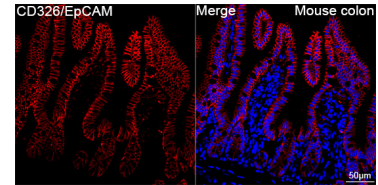
## Validation Data



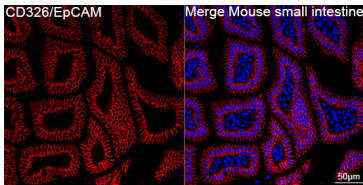
Flow cytometry:  $1 \times 10^6$  293T cells (negative control, left) and 293T (Transfection, right) cells were surface-stained with ABflo® 594 Rabbit anti-Mouse CD326/EpCAM mAb (A25347, 5  $\mu$ l/Test, orange line) or ABflo® 594 Rabbit IgG isotype control (A23821, 5  $\mu$ l/Test, blue line). Non-fluorescently stained cells were used as blank control (red line).



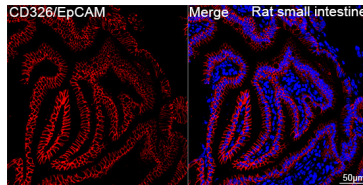
Flow cytometry:  $1 \times 10^6$  293T (Transfection) cells were surface-stained with ABflo® 594 Rabbit IgG isotype control (A23821, 5  $\mu$ l/Test, left) or ABflo® 594 Rabbit anti-Mouse CD326/EpCAM mAb (A25347, 5  $\mu$ l/Test, right).



Confocal imaging of paraffin-embedded Mouse colon tissue using ABflo® 594 Rabbit anti-Mouse CD326/EpCAM mAb (A25347, dilution 1:100). DAPI was used for nuclear staining (Blue). High pressure antigen retrieval performed with 0.01M Citrate Buffer (pH 6.0) prior to IF staining. Objective: 40x.



Confocal imaging of paraffin-embedded Mouse small intestine tissue using ABflo® 594 Rabbit anti-Mouse CD326/EpCAM mAb (A25347, dilution 1:100). DAPI was used for nuclear staining (Blue). High pressure antigen retrieval performed with 0.01M Citrate Buffer (pH 6.0) prior to IF staining. Objective: 40x.



Confocal imaging of paraffin-embedded Rat small intestine tissue using ABflo® 594 Rabbit anti-Mouse CD326/EpCAM mAb (A25347, dilution 1:100). DAPI was used for nuclear staining (Blue). High pressure antigen retrieval performed with 0.01M Citrate Buffer (pH 6.0) prior to IF staining. Objective: 40x.