

Cy3/Cy5 Rabbit mAb

Catalog No.: A25356 **Recombinant**

Basic Information

Observed MW**Calculated MW****Category**

Primary antibody

Applications

DB, ELISA

Cross-Reactivity

Species independent

CloneNo number

ARC63122

Background

Cy3 and Cy5 are reactive watersoluble fluorescent dyes of the cyanine dye family used for labelling proteins, peptides, DNA, RNA, and other biomolecules. They are usually synthesized with reactive groups on either one or both of the nitrogen side chains so that they can be chemically cross-linked to nucleic acids or protein molecules. They are small, pH insensitive (between pH 3 and pH 10), soluble in aqueous solution and have tolerance to DMSO. They are more photostable than fluorescein, have high molar extinction coefficients and favorable quantum yields. They are used in many different biological assays, including DNA microarrays, protein microarrays, two-dimensional protein analysis, fluorescence resonance energy transfer, and immunocytochemistry. Cy3 is excited maximally at 550 nm and emits maximally at 570 nm, in the green part of the spectrum. Cy5 is excited maximally at 649 nm and emits maximally at 670 nm, in the red part of the spectrum.

Recommended Dilutions

DB 1:1000 - 1:5000**ELISA** Recommended starting concentration is 1 µg/mL. Please optimize the concentration based on your specific assay requirements.

Immunogen Information

Gene ID

CAS:146368-15-2

Swiss Prot**Immunogen**

Chemical compounds corresponding to Cy3/Cy5.

Synonyms

Contact

 | 400-999-6126 | cn.market@abclonal.com.cn | www.abclonal.com.cn

Product Information

Source

Rabbit

Isotype

IgG

Purification

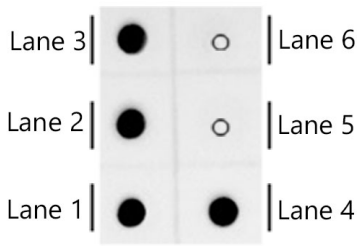
Affinity purification

Storage

Store at -20°C. Avoid freeze / thaw cycles.

Buffer: PBS containing 50% glycerol and 0.05% BSA, preserved with proclin300 or sodium azide (as specified on the Certificate of Analysis), pH 7.3.

Validation Data



Dot-blot analysis of all sorts of compounds using Cy3/Cy5 Rabbit mAb (A25356) at 1:2000 dilution.
Lane 1 : Cy5 Goat Anti-Mouse IgG (H+L)
Lane 2 : Cy5-NHS-BSA
Lane 3 : Cy3 Goat Anti-Mouse IgG (H+L)
Lane 4 : Cy3-NHS-BSA
Lane 5 : FITC Goat Anti-Mouse IgG (H+L)
Lane 6 : HRP Goat Anti-Mouse IgG (H+L)