

CD56/NCAM1 Rabbit mAb

Catalog No.: A25369 **Recombinant**

Basic Information

Observed MW

Refer to figures

Calculated MW

67kDa/80kDa/93kDa/119kDa

Category

Primary antibody

Applications

ELISA,IF/ICC,FC

Cross-Reactivity

Mouse

CloneNo number

ARC60214

Background

Predicted to enable LRR domain binding activity and phosphatase binding activity. Involved in commissural neuron axon guidance and regulation of semaphorin-plexin signaling pathway. Acts upstream of or within several processes, including homotypic cell-cell adhesion; positive regulation of calcium-mediated signaling; and regulation of exocyst assembly. Located in several cellular components, including external side of plasma membrane; growth cone; and neuronal cell body. Is expressed in several structures, including embryo mesenchyme; nervous system; sensory organ; skin; and urinary system. Human ortholog(s) of this gene implicated in bipolar disorder; middle cerebral artery infarction; and pancreatic cancer. Orthologous to human NCAM1 (neural cell adhesion molecule 1).

Recommended Dilutions

IF/ICC 1:500 - 1:1000

FC 1:500 - 1:1000

Immunogen Information

Gene ID

17967

Swiss Prot

P13595

Immunogen

Recombinant fusion protein containing a sequence corresponding to amino acids 20-711 of mouse CD56/NCAM1 (NP_001106675.1).

Synonyms

CD56; Ncam; E-NCAM; NCAM-1

Contact

☎ | 400-999-6126

✉ | cn.market@abclonal.com.cn

🌐 | www.abclonal.com.cn

Product Information

Source

Rabbit

Isotype

IgG

Purification

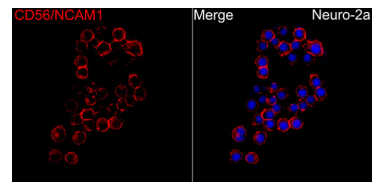
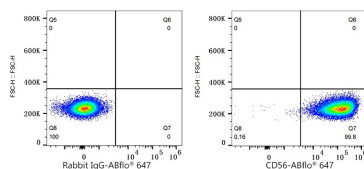
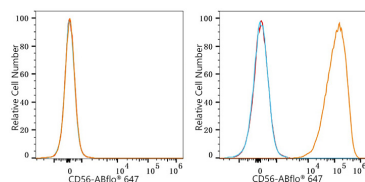
Affinity purification

Storage

Store at -20°C. Avoid freeze / thaw cycles.

Buffer: PBS with 0.05% proclin300,0.05% BSA,50% glycerol,pH7.3.

Validation Data



Flow cytometry: 1×10^6 L-929 cells (negative control, left) and Neuro-2a cells (right) were surface-stained with CD56/NCAM1 Rabbit mAb (A25369, 2 $\mu\text{g}/\text{mL}$, orange line) or ABflo® 647 Rabbit IgG isotype control (A22070, 5 $\mu\text{l}/\text{Test}$, blue line), followed by Alexa Fluor® 647 conjugated goat anti-rabbit pAb staining. Non-fluorescently stained cells were used as blank control (red line).

Flow cytometry: 1×10^6 Neuro-2a cells were surface-stained with ABflo® 647 Rabbit IgG isotype control (A22070, 5 $\mu\text{l}/\text{Test}$, left) or CD56/NCAM1 Rabbit mAb (A25369, 2 $\mu\text{g}/\text{mL}$, right).

Confocal imaging of Neuro-2a cells using CD56/NCAM1 Rabbit mAb (A25369, dilution 1:500) followed by a further incubation with Cy3 Goat Anti-Rabbit IgG (H+L) (AS007, dilution 1:500) (Red). DAPI was used for nuclear staining (Blue). Objective: 100x.