

Monkey IgA Rabbit mAb

Catalog No.: A25372 **Recombinant**

Basic Information

Observed MW

Refer to figures

Calculated MW

Category

Primary antibody

Applications

FC,ELISA

Cross-Reactivity

Cynomolgus monkey

CloneNo number

ARC59910

Background

Recommended Dilutions

FC 1:500 - 1:1000

ELISA Recommended starting concentration is 1 µg/mL. Please optimize the concentration based on your specific assay requirements.

Immunogen Information

Gene ID

Swiss Prot

Immunogen

Recombinant protein of cynomolgus monkey IgA.

Synonyms

Contact

☎ | 400-999-6126

✉ | cn.market@abclonal.com.cn

🌐 | www.abclonal.com.cn

Product Information

Source

Rabbit

Isotype

IgG

Purification

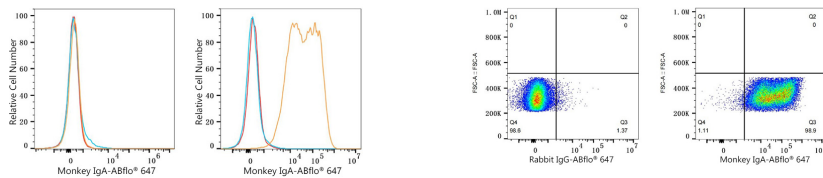
Affinity purification

Storage

Store at -20°C. Avoid freeze / thaw cycles.

Buffer: PBS with 0.05% proclin300,0.05% BSA,50% glycerol,pH7.3.

Validation Data



Flow cytometry: 1×10^6 293T cells (negative control, left) and 293T (Transfection, right) cells were surface-stained with Monkey IgA Rabbit mAb (A25372, 2 $\mu\text{g}/\text{mL}$, orange line) or ABflo® 647 Rabbit IgG isotype control (A22070, 5 $\mu\text{g}/\text{Test}$, blue line), followed by Alexa Fluor® 647 conjugated goat anti-rabbit pAb staining. Non-fluorescently stained cells were used as blank control (red line).

Flow cytometry: 1×10^6 293T (Transfection) cells were surface-stained with ABflo® 647 Rabbit IgG isotype control (A22070, 5 $\mu\text{g}/\text{Test}$, left) or Monkey IgA Rabbit mAb (A25372, 2 $\mu\text{g}/\text{mL}$, right).