

CD105/Endoglin Rabbit mAb

Catalog No.: A25376 **Recombinant**

Basic Information

Observed MW

90kDa

Calculated MW

70kDa

Category

Primary antibody

Applications

ELISA,WB,FC

Cross-Reactivity

Mouse

CloneNo number

ARC66234

Background

Enables protein homodimerization activity and transforming growth factor beta binding activity. Involved in several processes, including circulatory system development; positive regulation of cell differentiation; and regulation of gene expression. Acts upstream of or within circulatory system development and positive regulation of angiogenesis. Located in endothelial microparticle. Is expressed in several structures, including brain; cardiovascular system; extraembryonic vascular system; and lung. Used to study arteriovenous malformations of the brain and hereditary hemorrhagic telangiectasia. Human ortholog(s) of this gene implicated in arteriovenous malformation; arteriovenous malformations of the brain; breast cancer; hereditary hemorrhagic telangiectasia; and intracranial aneurysm. Orthologous to human ENG (endoglin).

Recommended Dilutions

WB	1:1000 - 1:5000
FC	1:500 - 1:1000

Immunogen Information

Gene ID

13805

Swiss Prot

Q63961

Immunogen

Recombinant fusion protein containing a sequence corresponding to amino acids 27-581 of mouse CD105 (NP_031958.2).

Synonyms

Endo; CD105; S-endoglin

Contact

☎ | 400-999-6126

✉ | cn.market@abclonal.com.cn

🌐 | www.abclonal.com.cn

Product Information

Source

Rabbit

Isotype

IgG

Purification

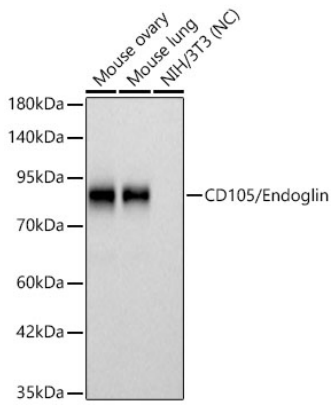
Affinity purification

Storage

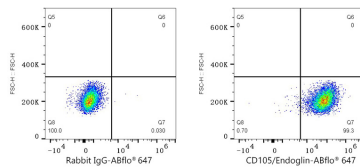
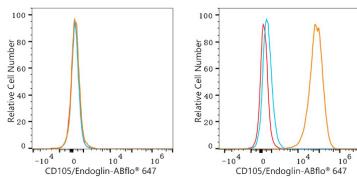
Store at -20°C. Avoid freeze / thaw cycles.

Buffer: PBS with 0.05% proclin300,0.05% BSA,50% glycerol,pH7.3.

Validation Data



Western blot analysis of various lysates using CD105/Endoglin Rabbit mAb (A25376) at 1:2000 dilution.
 Secondary antibody: HRP-conjugated Goat anti-Rabbit IgG (H+L) (AS014) at 1:10000 dilution.
 Lysates/proteins: 25 µg per lane.
 Blocking buffer: 3% nonfat dry milk in TBST.
 Detection: ECL Basic Kit (RM00020).
 Negative control (NC): NIH/3T3.
 Exposure time: 30s.



Flow cytometry: 1×10^6 NIH/3T3 cells (negative control, left) and bEnd.3 cells (right) were surface-stained with CD105/Endoglin Rabbit mAb (A25376, 2 µg/mL, orange line) or ABflo® 647 Rabbit IgG isotype control (A22070, 5 µl/Test, blue line), followed by Alexa Fluor® 647 conjugated goat anti-rabbit pAb staining. Non-fluorescently stained cells were used as blank control (red line).

Flow cytometry: 1×10^6 bEnd.3 cells were surface-stained with ABflo® 647 Rabbit IgG isotype control (A22070, 5 µl/Test, left) or CD105/Endoglin Rabbit mAb (A25376, 2 µg/mL, right).