

# ABflo® 488 Rabbit anti-Mouse CD105/Endoglin mAb

Catalog No.: A25377

## Basic Information

### Observed MW

### Calculated MW

70kDa

### Category

Primary antibody

### Applications

FC

### Cross-Reactivity

Mouse

### CloneNo number

ARC66234-ABflo488

### Conjugate

ABflo® 488. Ex:491nm. Em:516nm.

## Recommended Dilutions

FC 5 µl per 10<sup>6</sup> cells in  
100 µl volume

## Background

Enables protein homodimerization activity and transforming growth factor beta binding activity. Involved in several processes, including circulatory system development; positive regulation of cell differentiation; and regulation of gene expression. Acts upstream of or within circulatory system development and positive regulation of angiogenesis. Located in endothelial microparticle. Is expressed in several structures, including brain; cardiovascular system; extraembryonic vascular system; and lung. Used to study arteriovenous malformations of the brain and hereditary hemorrhagic telangiectasia. Human ortholog(s) of this gene implicated in arteriovenous malformation; arteriovenous malformations of the brain; breast cancer; hereditary hemorrhagic telangiectasia; and intracranial aneurysm. Orthologous to human ENG (endoglin).

## Immunogen Information

### Gene ID

13805

### Swiss Prot

Q63961

### Immunogen

Recombinant fusion protein containing a sequence corresponding to amino acids 27-581 of mouse CD105 (NP\_031958.2).

### Synonyms

Endo; CD105; S-endoglin

## Contact

☎ | 400-999-6126

✉ | [cn.market@abclonal.com.cn](mailto:cn.market@abclonal.com.cn)

🌐 | [www.abclonal.com.cn](http://www.abclonal.com.cn)

## Product Information

### Source

Rabbit

### Isotype

IgG

### Purification

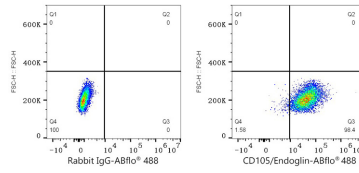
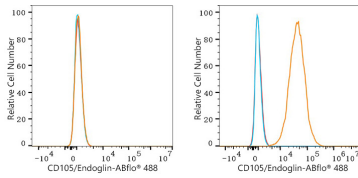
Affinity purification

### Storage

Store at 2-8°C. Avoid freeze.

Buffer: PBS with 0.03% proclin300,0.2% BSA,pH7.3.

## Validation Data



Flow cytometry:  $1 \times 10^6$  NIH/3T3 cells (negative control, left) and bEnd.3 cells (right) were surface-stained with ABflo® 488 Rabbit anti-Mouse CD105/Endoglin mAb (A25377,5  $\mu$ l/Test, orange line) or ABflo® 488 Rabbit IgG isotype control (A22069,5  $\mu$ l/Test, blue line). Non-fluorescently stained cells were used as blank control (red line).

Flow cytometry:  $1 \times 10^6$  bEnd.3 cells were surface-stained with ABflo® 488 Rabbit IgG isotype control (A22069,5  $\mu$ l/Test, left) or ABflo® 488 Rabbit anti-Mouse CD105/Endoglin mAb (A25377,5  $\mu$ l/Test, right).