

ABflo® 647 Rabbit anti-Mouse CD105/Endoglin mAb

Catalog No.: A25378

Basic Information

Observed MW

Calculated MW

70kDa

Category

Primary antibody

Applications

FC

Cross-Reactivity

Mouse

CloneNo number

ARC66234-ABflo647

Conjugate

ABflo® 647. Ex:648nm. Em:664nm.

Recommended Dilutions

FC 5 µl per 10⁶ cells in
100 µl volume

Background

Enables protein homodimerization activity and transforming growth factor beta binding activity. Involved in several processes, including circulatory system development; positive regulation of cell differentiation; and regulation of gene expression. Acts upstream of or within circulatory system development and positive regulation of angiogenesis. Located in endothelial microparticle. Is expressed in several structures, including brain; cardiovascular system; extraembryonic vascular system; and lung. Used to study arteriovenous malformations of the brain and hereditary hemorrhagic telangiectasia. Human ortholog(s) of this gene implicated in arteriovenous malformation; arteriovenous malformations of the brain; breast cancer; hereditary hemorrhagic telangiectasia; and intracranial aneurysm. Orthologous to human ENG (endoglin).

Immunogen Information

Gene ID

13805

Swiss Prot

Q63961

Immunogen

Recombinant fusion protein containing a sequence corresponding to amino acids 27-581 of mouse CD105 (NP_031958.2).

Synonyms

Endo; CD105; S-endoglin

Contact

☎ | 400-999-6126

✉ | cn.market@abclonal.com.cn

🌐 | www.abclonal.com.cn

Product Information

Source

Rabbit

Isotype

IgG

Purification

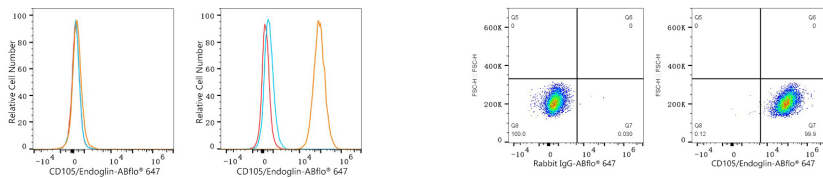
Affinity purification

Storage

Store at 2-8°C. Avoid freeze.

Buffer: PBS with 0.03% proclin300,0.2% BSA,pH7.3.

Validation Data



Flow cytometry: 1×10^6 NIH/3T3 cells (negative control, left) and bEnd.3 cells (right) were surface-stained with ABflo® 647 Rabbit anti-Mouse CD105/Endoglin mAb (A25378, 5 μ l/Test, orange line) or ABflo® 647 Rabbit IgG isotype control (A22070, 5 μ l/Test, blue line). Non-fluorescently stained cells were used as blank control (red line).

Flow cytometry: 1×10^6 bEnd.3 cells were surface-stained with ABflo® 647 Rabbit IgG isotype control (A22070, 5 μ l/Test, left) or ABflo® 647 Rabbit anti-Mouse CD105/Endoglin mAb (A25378, 5 μ l/Test, right).