

ABflo® 647 Rabbit anti-Human CD24 mAb

Catalog No.: A25381

Basic Information

Observed MW

Refer to figures

Calculated MW

8kDa; 13kDa

Category

Primary antibody

Applications

IF/ICC,FC

Cross-Reactivity

Human

CloneNo number

ARC66763

Conjugate

ABflo® 647. Ex:648nm. Em:664nm.

Recommended Dilutions

IF/ICC 1:50 - 1:200

FC 5 µl per 10⁶ cells in
100 µl volume

Background

This gene encodes a sialoglycoprotein that is expressed on mature granulocytes and B cells and modulates growth and differentiation signals to these cells. The precursor protein is cleaved to a short 32 amino acid mature peptide which is anchored via a glycosyl phosphatidylinositol (GPI) link to the cell surface. This gene was missing from previous genome assemblies, but is properly located on chromosome 6. Non-transcribed pseudogenes have been designated on chromosomes 1, 15, 20, and Y. Alternative splicing results in multiple transcript variants.

Immunogen Information

Gene ID

100133941

Swiss Prot

P25063

Immunogen

Synthetic peptide. This information is considered to be commercially sensitive.

Synonyms

CD24A; CD24

Contact

☎ | 400-999-6126

✉ | cn.market@abclonal.com.cn

🌐 | www.abclonal.com.cn

Product Information

Source

Rabbit

Isotype

IgG

Purification

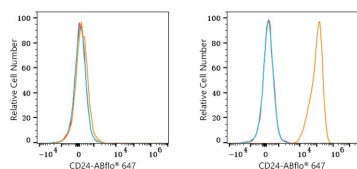
Affinity purification

Storage

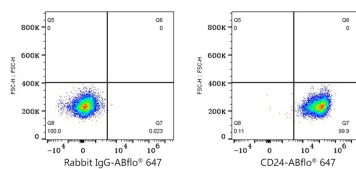
Store at 2-8°C. Avoid freeze.

Buffer: PBS containing 0.2% BSA, preserved with proclin300 or sodium azide (as specified on the Certificate of Analysis), pH 7.3.

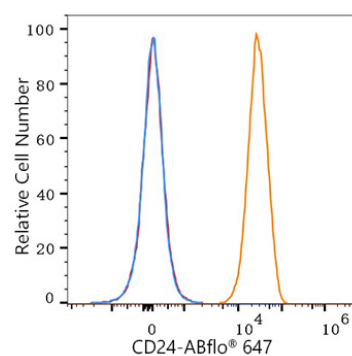
Validation Data



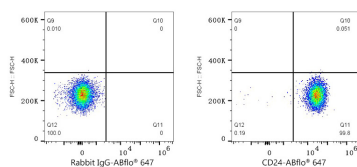
Flow cytometry: 1×10^6 293F cells (Low Expression, left) and MCF7 cells (right) were surface-stained with ABflo® 647 Rabbit anti-Human CD24 mAb (A25381, 5 μ l/Test, orange line) or ABflo® 647 Rabbit IgG isotype control (A22070, 5 μ l/Test, blue line). Non-fluorescently stained cells were used as blank control (red line).



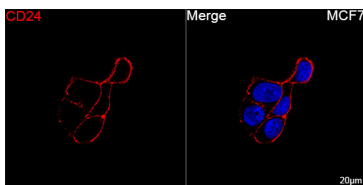
Flow cytometry: 1×10^6 MCF7 cells were surface-stained with ABflo® 647 Rabbit IgG isotype control (A22070, 5 μ l/Test, left) or ABflo® 647 Rabbit anti-Human CD24 mAb (A25381, 5 μ l/Test, right).



Flow cytometry: 1×10^6 Human peripheral blood granulocytes were surface-stained with ABflo® 647 Rabbit anti-Human CD24 mAb (A25381, 5 μ l/Test, orange line) or ABflo® 647 Rabbit IgG isotype control (A22070, 5 μ l/Test, blue line). Non-fluorescently stained cells were used as blank control (red line).



Flow cytometry: 1×10^6 Human peripheral blood granulocytes were surface-stained with ABflo® 647 Rabbit IgG isotype control (A22070, 5 μ l/Test, left) or ABflo® 647 Rabbit anti-Human CD24 mAb (A25381, 5 μ l/Test, right).



Confocal imaging of MCF7 cells using ABflo® 647 Rabbit anti-Human CD24 mAb (A25381, dilution 1:100). DAPI was used for nuclear staining (Blue). Objective: 100x.