

Mki67 Rabbit pAb

Catalog No.: A25399

3 Publications

Basic Information

Observed MW

Refer to figures

Calculated MW

350kDa

Category

Primary antibody

Applications

IHC-P, IF/ICC, ELISA

Cross-Reactivity

Mouse, Rat

Background

Predicted to enable protein C-terminus binding activity. Involved in regulation of chromatin organization. Acts upstream of or within cholangiocyte proliferation; hepatocyte proliferation; and meiotic cell cycle. Located in chromosome; cytoplasm; and nucleolus. Is expressed in several structures, including alimentary system; brain; genitourinary system; sensory organ; and skin. Human ortholog(s) of this gene implicated in Crohn's disease; breast cancer; human immunodeficiency virus infectious disease; and pancreatic cancer. Orthologous to human MKI67 (marker of proliferation Ki-67).

Recommended Dilutions

IHC-P 1:2000 - 1:8000

IF/ICC 1:50 - 1:200

ELISA Recommended starting concentration is 1 µg/mL. Please optimize the concentration based on your specific assay requirements.

Immunogen Information

Gene ID

17345

Swiss Prot

E9PVX6

Immunogen

Recombinant protein (or fragment). This information is considered to be commercially sensitive.

Synonyms

Ki67; Ki-67; D630048A14Rik

Contact

 | 400-999-6126 | cn.market@abclonal.com.cn | www.abclonal.com.cn

Product Information

Source

Rabbit

Isotype

IgG

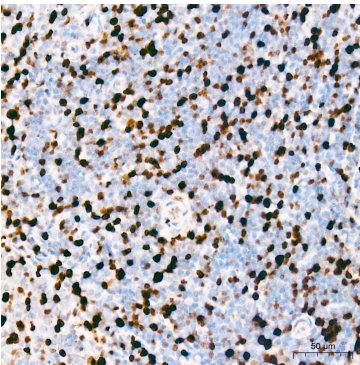
Purification

Affinity purification

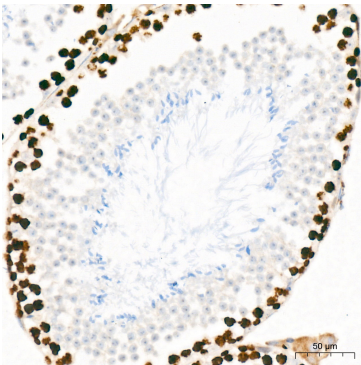
Storage

Store at -20°C. Avoid freeze / thaw cycles.

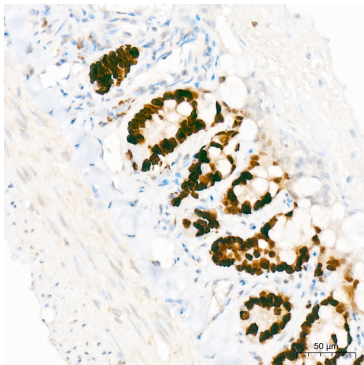
Buffer: PBS with 0.05% proclin300, 50% glycerol, pH7.3.



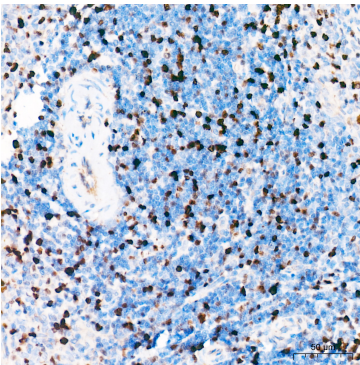
Immunohistochemistry analysis of paraffin-embedded Mouse spleen tissue using Mki67 Rabbit pAb (A25399) at a dilution of 1:8000 (40x lens). High pressure antigen retrieval performed with 0.01M Citrate Buffer (pH 6.0) prior to IHC staining.



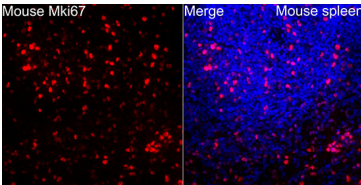
Immunohistochemistry analysis of paraffin-embedded Mouse testis tissue using Mki67 Rabbit pAb (A25399) at a dilution of 1:8000 (40x lens). High pressure antigen retrieval performed with 0.01M Citrate Buffer (pH 6.0) prior to IHC staining.



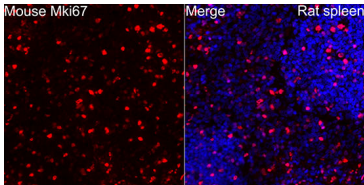
Immunohistochemistry analysis of paraffin-embedded rat colon tissue using Mki67 Rabbit pAb (A25399) at a dilution of 1:8000 (40x lens). High pressure antigen retrieval performed with 0.01M Citrate Buffer (pH 6.0) prior to IHC staining.



Immunohistochemistry analysis of paraffin-embedded rat spleen tissue using Mki67 Rabbit pAb (A25399) at a dilution of 1:8000 (40x lens). High pressure antigen retrieval performed with 0.01M Citrate Buffer (pH 6.0) prior to IHC staining.



Immunofluorescence analysis of paraffin-embedded Mouse spleen tissue using Mouse Mki67 Rabbit pAb (A25399) at a dilution of 1:100 (40x lens). Secondary antibody: Cy3-conjugated Goat anti-Rabbit IgG (H+L) (AS007) at 1:500 dilution. Blue: DAPI for nuclear staining. Perform high pressure antigen retrieval with 0.01 M citrate buffer (pH 6.0) prior to IF staining.



Immunofluorescence analysis of paraffin-embedded Rat spleen tissue using Mouse Mki67 Rabbit pAb (A25399) at a dilution of 1:100 (40x lens). Secondary antibody: Cy3-conjugated Goat anti-Rabbit IgG (H+L) (AS007) at 1:500 dilution. Blue: DAPI for nuclear staining. Perform high pressure antigen retrieval with 0.01 M citrate buffer (pH 6.0) prior to IF staining.