

# ABflo® 488 Rabbit anti-Mouse IL1R1/CD121a mAb

Catalog No.: A25404

## Basic Information

### Observed MW

### Calculated MW

67kDa

### Category

Primary antibody

### Applications

FC

### Cross-Reactivity

Mouse

### CloneNo number

ARC65805-ABflo488

### Conjugate

ABflo® 488. Ex:491nm. Em:516nm.

## Recommended Dilutions

FC 5 µl per 10<sup>6</sup> cells in  
100 µl volume

## Background

Enables interleukin-1 binding activity; interleukin-1 receptor activity; and protease binding activity. Involved in interleukin-1-mediated signaling pathway. Acts upstream of or within several processes, including cytokine-mediated signaling pathway; positive regulation of interleukin-1-mediated signaling pathway; and positive regulation of neutrophil extravasation. Located in external side of plasma membrane. Is expressed in brain; dorsal aorta; liver; reproductive system; and spleen. Used to study type 1 diabetes mellitus. Human ortholog(s) of this gene implicated in systemic sclerosis and type 1 diabetes mellitus. Orthologous to human IL1R1 (interleukin 1 receptor type 1).

## Immunogen Information

### Gene ID

16177

### Swiss Prot

P13504

### Immunogen

Recombinant fusion protein containing a sequence corresponding to amino acids 20-338 of mouse IL1R1/CD121a (NP\_032388.1).

### Synonyms

IL-iR; CD121a; CD121b; IL-1R1; Il1r-1; IL-1R-1; IL-1RT1; IL-1RT-1; IL-1R-alpha

## Contact

☎ | 400-999-6126

✉ | [cn.market@abclonal.com.cn](mailto:cn.market@abclonal.com.cn)

🌐 | [www.abclonal.com.cn](http://www.abclonal.com.cn)

## Product Information

### Source

Rabbit

### Isotype

IgG

### Purification

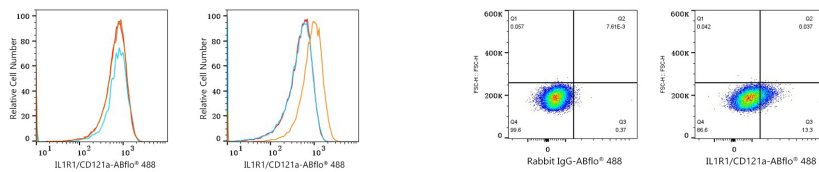
Affinity purification

### Storage

Store at 2-8°C. Avoid freeze.

Buffer: PBS with 0.03% proclin300,0.2% BSA,pH7.3.

## Validation Data



Flow cytometry:  $1 \times 10^6$  Neuro-2a cells (negative control, left) and NIH/3T3 cells (right) were surface-stained with ABflo® 488 Rabbit anti-Mouse IL1R1/CD121a mAb (A25404, 5  $\mu$ l/Test, orange line) or ABflo® 488 Rabbit IgG isotype control (A22069, 5  $\mu$ l/Test, blue line). Non-fluorescently stained cells were used as blank control (red line).

Flow cytometry:  $1 \times 10^6$  NIH/3T3 cells were surface-stained with ABflo® 488 Rabbit IgG isotype control (A22069, 5  $\mu$ l/Test, left) or ABflo® 488 Rabbit anti-Mouse IL1R1/CD121a mAb (A25404, 5  $\mu$ l/Test, right).