

ABflo® 594 Rabbit anti-Mouse IL1R1/CD121a mAb

Catalog No.: A25406

Basic Information

Observed MW

Calculated MW

67kDa

Category

Primary antibody

Applications

FC

Cross-Reactivity

Mouse

CloneNo number

ARC65805-ABflo594

Conjugate

ABflo® 594. Ex:588nm. Em:604nm.

Recommended Dilutions

FC 5 µl per 10⁶ cells in
100 µl volume

Background

Enables interleukin-1 binding activity; interleukin-1 receptor activity; and protease binding activity. Involved in interleukin-1-mediated signaling pathway. Acts upstream of or within several processes, including cytokine-mediated signaling pathway; positive regulation of interleukin-1-mediated signaling pathway; and positive regulation of neutrophil extravasation. Located in external side of plasma membrane. Is expressed in brain; dorsal aorta; liver; reproductive system; and spleen. Used to study type 1 diabetes mellitus. Human ortholog(s) of this gene implicated in systemic sclerosis and type 1 diabetes mellitus. Orthologous to human IL1R1 (interleukin 1 receptor type 1).

Immunogen Information

Gene ID

16177

Swiss Prot

P13504

Immunogen

Recombinant fusion protein containing a sequence corresponding to amino acids 20-338 of mouse IL1R1/CD121a (NP_032388.1).

Synonyms

IL-iR; CD121a; CD121b; IL-1R1; Il1r-1; IL-1R-1; IL-1RT1; IL-1RT-1; IL-1R-alpha

Contact

☎ | 400-999-6126

✉ | cn.market@abclonal.com.cn

🌐 | www.abclonal.com.cn

Product Information

Source

Rabbit

Isotype

IgG

Purification

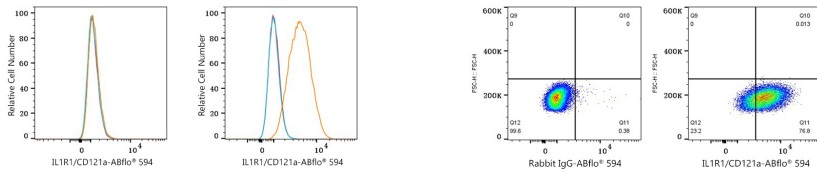
Affinity purification

Storage

Store at 2-8°C. Avoid freeze.

Buffer: PBS with 0.03% proclin300,0.2% BSA,pH7.3.

Validation Data



Flow cytometry: 1×10^6 Neuro-2a cells (negative control, left) and NIH/3T3 cells (right) were surface-stained with ABflo® 594 Rabbit anti-Mouse IL1R1/CD121a mAb (A25406, 5 μ l/Test, orange line) or ABflo® 594 Rabbit IgG isotype control (A23821, 5 μ l/Test, blue line). Non-fluorescently stained cells were used as blank control (red line).

Flow cytometry: 1×10^6 NIH/3T3 cells were surface-stained with ABflo® 594 Rabbit IgG isotype control (A23821, 5 μ l/Test, left) or ABflo® 594 Rabbit anti-Mouse IL1R1/CD121a mAb (A25406, 5 μ l/Test, right).