

ABflo® 594 Rabbit anti-Human FcεR1α mAb

Catalog No.: A25412

Basic Information

Observed MW

Calculated MW

30kDa

Category

Primary antibody

Applications

FC

Cross-Reactivity

Human

CloneNo number

ARC66910

Conjugate

ABflo® 594. Ex:588nm. Em:604nm.

Background

The immunoglobulin epsilon receptor (IgE receptor) is the initiator of the allergic response. When two or more high-affinity IgE receptors are brought together by allergen-bound IgE molecules, mediators such as histamine that are responsible for allergy symptoms are released. This receptor is comprised of an alpha subunit, a beta subunit, and two gamma subunits. The protein encoded by this gene represents the alpha subunit.

Recommended Dilutions

FC 5 µl per 10⁶ cells in
100 µl volume

Immunogen Information

Gene ID

2205

Swiss Prot

P12319

Immunogen

Recombinant protein (or fragment). This information is considered to be commercially sensitive.

Synonyms

FCE1A; FcERI; FCERIA

Contact

☎ | 400-999-6126

✉ | cn.market@abclonal.com.cn

🌐 | www.abclonal.com.cn

Product Information

Source

Rabbit

Isotype

IgG

Purification

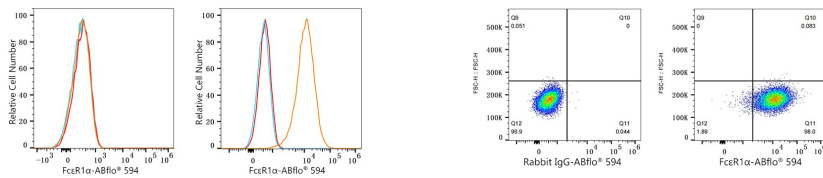
Affinity purification

Storage

Store at 2-8°C. Avoid freeze.

Buffer: PBS containing 0.2% BSA, preserved with proclin300 or sodium azide (as specified on the Certificate of Analysis), pH 7.3.

Validation Data



Flow cytometry: 1×10^6 Jurkat cells (negative control, left) and HEL cells (right) were surface-stained with ABflo® 594 Rabbit anti-Human FcεR1α mAb (A25412,5 μl/Test, orange line) or ABflo® 594 Rabbit IgG isotype control (A23821,5 μl/Test, blue line). Non-fluorescently stained cells were used as blank control (red line).

Flow cytometry: 1×10^6 HEL cells were surface-stained with ABflo® 594 Rabbit IgG isotype control (A23821,5 μl/Test, left) or ABflo® 594 Rabbit anti-Human FcεR1α mAb (A25412,5 μl/Test, right).