

ATRX Rabbit pAb

Catalog No.: A25419

Basic Information

Observed MW

Refer to figures

Calculated MW

283kDa

Category

Primary antibody

Applications

ELISA,IF/ICC

Cross-Reactivity

Mouse

Background

The protein encoded by this gene contains an ATPase/helicase domain, and thus it belongs to the SWI/SNF family of chromatin remodeling proteins. This protein is found to undergo cell cycle-dependent phosphorylation, which regulates its nuclear matrix and chromatin association, and suggests its involvement in the gene regulation at interphase and chromosomal segregation in mitosis. Mutations in this gene are associated with X-linked syndromes exhibiting cognitive disabilities as well as alpha-thalassemia (ATRX) syndrome. These mutations have been shown to cause diverse changes in the pattern of DNA methylation, which may provide a link between chromatin remodeling, DNA methylation, and gene expression in developmental processes. Multiple alternatively spliced transcript variants encoding distinct isoforms have been reported.

Recommended Dilutions

IF/ICC 1:50 - 1:200

Immunogen Information

Gene ID

546

Swiss Prot

P46100

Immunogen

Recombinant fusion protein containing a sequence corresponding to amino acids 2273-2413 of human ATRX (NP_000480.3).

Synonyms

JMS; XH2; XNP; MRX52; RAD54; RAD54L; ZNF-HX

Contact

☎ | 400-999-6126

✉ | cn.market@abclonal.com.cn

🌐 | www.abclonal.com.cn

Product Information

Source

Rabbit

Isotype

IgG

Purification

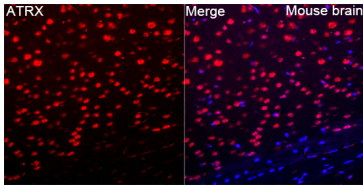
Affinity purification

Storage

Store at -20°C. Avoid freeze / thaw cycles.

Buffer: PBS with 0.05% proclin300,50% glycerol,pH7.3.

Validation Data



Immunofluorescence analysis of paraffin-embedded Mouse brain tissue using ATRX Rabbit pAb(A25419) at a dilution of 1:100 (40x lens). Secondary antibody: Cy3 Goat Anti-Rabbit IgG (H+L)(AS007) at 1:500 dilution. Blue: DAPI for nuclear staining. Perform microwave antigen retrieval with 0.01 M citrate buffer (pH 6.0) prior to IF staining.