

[KD Validated] CAT1 Rabbit pAb

Catalog No.: A25422

Basic Information

Observed MW

70kDa

Calculated MW

68kDa

Category

Primary antibody

Applications

ELISA, WB

Cross-Reactivity

Human, Mouse

Background

Enables L-arginine transmembrane transporter activity and L-histidine transmembrane transporter activity. Involved in amino acid transport. Located in membrane. Part of apical plasma membrane; basolateral plasma membrane; and protein-containing complex.

Recommended Dilutions

WB 1:500 - 1:1000

Immunogen Information

Gene ID

6541

Swiss Prot

P30825

Immunogen

A synthetic peptide corresponding to a sequence within amino acids 200-300 of human SLC7A1(NP_003036.1).

Synonyms

ERR; ATRC1; CAT-1; HCAT1; REC1L

Contact

 | 400-999-6126

 | cn.market@abclonal.com.cn

 | www.abclonal.com.cn

Product Information

Source

Rabbit

Isotype

IgG

Purification

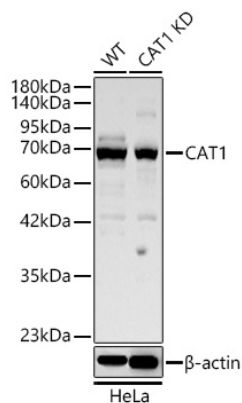
Affinity purification

Storage

Store at -20°C. Avoid freeze / thaw cycles.

Buffer: PBS with 0.05% proclin300, 50% glycerol, pH7.3.

Validation Data



Western blot analysis of lysates from wild type (WT) and CAT1 knockdown (KD) HeLa cells using [KD Validated] CAT1 Rabbit pAb (A25422) at 1:1000 dilution.

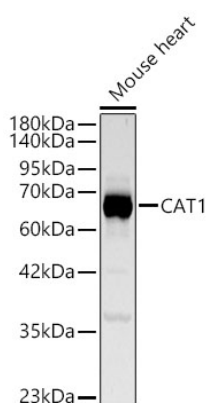
Secondary antibody:HRP Goat Anti-Rabbit IgG (H+L)(AS014) at 1:10000 dilution.

Lysates/proteins: 17 μ g per lane.

Blocking buffer: 3% nonfat dry milk in TBST.

Detection:ECL Basic Kit (RM00020).

Exposure time: 20s.



Western blot analysis of lysates from Mouse heart using [KD Validated] CAT1 Rabbit pAb(A25422) at 1:1000 dilution.

Secondary antibody:HRP Goat Anti-Rabbit IgG (H+L)(AS014) at 1:10000 dilution.

Lysates/proteins: 25 μ g per lane.

Blocking buffer: 3% nonfat dry milk in TBST.

Detection:ECL Basic Kit (RM00020).

Exposure time:20s.