

FASTKD2 Rabbit pAb

Catalog No.: A25423

Basic Information

Observed MW

71kDa

Calculated MW

81kDa

Category

Primary antibody

Applications

ELISA, WB, IHC-P

Cross-Reactivity

Human, Mouse

Background

This gene encodes a protein that is localized in the mitochondrial inner compartment and that may play a role in mitochondrial apoptosis. Nonsense mutations have been reported to result in cytochrome c oxidase deficiency.

Recommended Dilutions

WB 1:500 - 1:1000

IHC-P 1:100 - 1:500

Immunogen Information

Gene ID

22868

Swiss Prot

Q9NYY8

Immunogen

A synthetic peptide corresponding to a sequence within amino acids 51-150 of human FASTKD2(NP_055744.2).

Synonyms

COXPD44; KIAA0971

Contact

☎ | 400-999-6126

✉ | cn.market@abclonal.com.cn

🌐 | www.abclonal.com.cn

Product Information

Source

Rabbit

Isotype

IgG

Purification

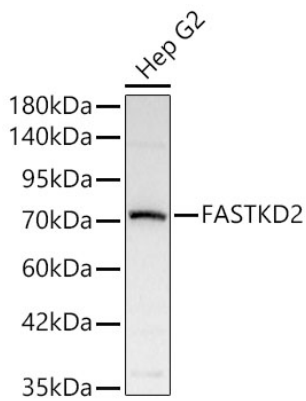
Affinity purification

Storage

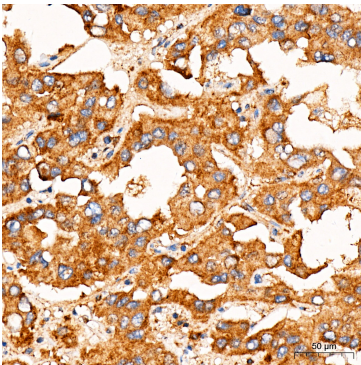
Store at -20°C. Avoid freeze / thaw cycles.

Buffer: PBS with 0.05% proclin300, 50% glycerol, pH7.3.

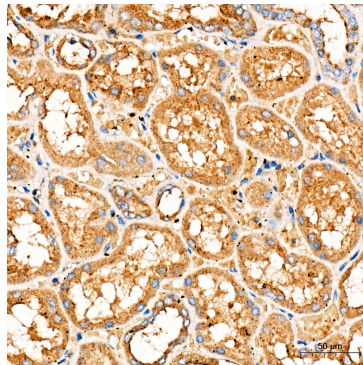
Validation Data



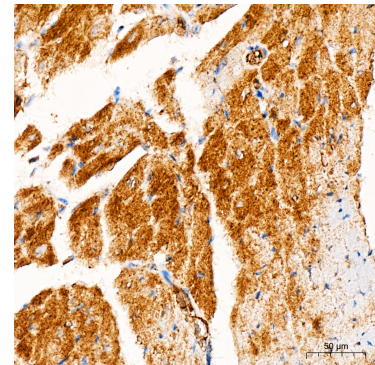
Western blot analysis of lysates from Hep G2 cells using FASTKD2 Rabbit pAb(A25423) at 1:1000 dilution. Secondary antibody:HRP Goat Anti-Rabbit IgG (H+L)(AS014) at 1:10000 dilution. Lysates/proteins: 25 µg per lane. Blocking buffer: 3% nonfat dry milk in TBST. Detection:ECL Basic Kit (RM00020). Exposure time:1s.



Immunohistochemistry analysis of FASTKD2 in paraffin-embedded Human liver cancer tissue using FASTKD2 Rabbit pAb (A25423) at a dilution of 1:500 (40x lens). High pressure antigen retrieval was performed with 0.01 M citrate buffer (pH 6.0) prior to IHC staining.



Immunohistochemistry analysis of FASTKD2 in paraffin-embedded Human kidney tissue using FASTKD2 Rabbit pAb (A25423) at a dilution of 1:500 (40x lens). High pressure antigen retrieval was performed with 0.01 M citrate buffer (pH 6.0) prior to IHC staining.



Immunohistochemistry analysis of FASTKD2 in paraffin-embedded Mouse heart tissue using FASTKD2 Rabbit pAb (A25423) at a dilution of 1:500 (40x lens). High pressure antigen retrieval was performed with 0.01 M citrate buffer (pH 6.0) prior to IHC staining.