

CCL25 Rabbit pAb

Catalog No.: A25431

Basic Information

Observed MW

17kDa

Calculated MW

17kDa

Category

Primary antibody

Applications

ELISA, WB, IHC-P

Cross-Reactivity

Human, Mouse, Rat

Background

This antimicrobial gene belongs to the subfamily of small cytokine CC genes. Cytokines are a family of secreted proteins involved in immunoregulatory and inflammatory processes. The CC cytokines are proteins characterized by two adjacent cysteines. The cytokine encoded by this gene displays chemotactic activity for dendritic cells, thymocytes, and activated macrophages but is inactive on peripheral blood lymphocytes and neutrophils. The product of this gene binds to chemokine receptor CCR9. Alternative splicing results in multiple transcript variants.

Recommended Dilutions

WB 1:500 - 1:1000**IHC-P** 1:100 - 1:500

Immunogen Information

Gene ID

6370

Swiss Prot

O15444

Immunogen

A synthetic peptide corresponding to a sequence within amino acids 50-150 of human CCL25 (NP_001381563.1).

Synonyms

TECK; Ckb15; SCYA25; TECKvar; Ck beta-15

Contact

 | 400-999-6126 | cn.market@abclonal.com.cn | www.abclonal.com.cn

Product Information

Source

Rabbit

Isotype

IgG

Purification

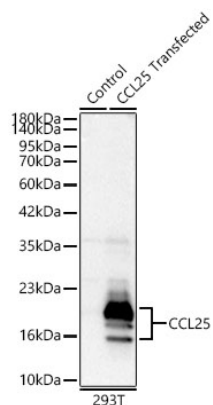
Affinity purification

Storage

Store at -20°C. Avoid freeze / thaw cycles.

Buffer: PBS with 0.05% proclin300, 50% glycerol, pH7.3.

Validation Data



Western blot analysis of lysates from wild type (WT) and 293T cells transfected with CCL25 using CCL25 Rabbit pAb(A25431) at 1:1000 dilution.

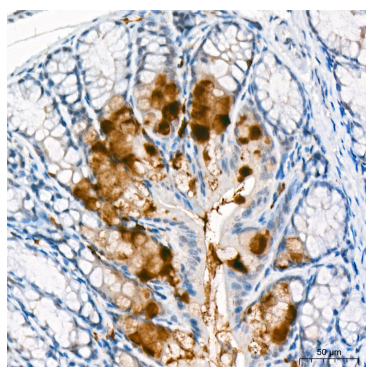
Secondary antibody:HRP Goat Anti-Rabbit IgG (H+L)(AS014) at 1:10000 dilution.

Lysates/proteins: 30 µg per lane.

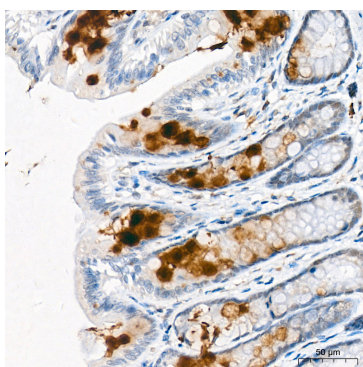
Blocking buffer: 3% nonfat dry milk in TBST.

Detection:ECL Basic Kit (RM00020).

Exposure time: 10s.



Immunohistochemistry analysis of CCL25 in paraffin-embedded mouse large intestine tissue using CCL25 Rabbit pAb (A25431) at a dilution of 1:300 (40x lens). High pressure antigen retrieval was performed with 0.01 M citrate buffer (pH 6.0) prior to IHC staining.



Immunohistochemistry analysis of CCL25 in paraffin-embedded rat large intestine tissue using CCL25 Rabbit pAb (A25431) at a dilution of 1:300 (40x lens). High pressure antigen retrieval was performed with 0.01 M citrate buffer (pH 6.0) prior to IHC staining.