

S100a9 Rabbit pAb

Catalog No.: A25434

Basic Information

Observed MW

13kDa

Calculated MW

13kDa

Category

Primary antibody

Applications

ELISA, WB, IHC-P

Cross-Reactivity

Human, Mouse

Background

Predicted to enable calcium ion binding activity and calcium-dependent protein binding activity. Involved in peptidyl-cysteine S-nitrosylation; positive regulation of blood coagulation; and regulation of translation. Acts upstream of or within several processes, including actin cytoskeleton reorganization; astrocyte development; and regulation of integrin biosynthetic process. Predicted to be located in cell junction; cytosol; and nucleoplasm. Predicted to be active in cytoplasm; extracellular space; and nucleus. Is expressed in several structures, including jaw; liver; otic capsule; skeleton; and spleen red pulp. Human ortholog(s) of this gene implicated in myocarditis. Orthologous to human S100A9 (S100 calcium binding protein A9).

Recommended Dilutions

| | |
|-------|----------------|
| WB | 1:500 - 1:1000 |
| IHC-P | 1:500 - 1:1000 |

Immunogen Information

Gene ID

20202

Swiss Prot

P31725

Immunogen

Recombinant fusion protein containing a sequence corresponding to amino acids 1-113 of mouse S100a9 (NP_033140.1).

Synonyms

p14; Cagb; GAGB; L1Ag; BEE22; MRP14; 60B8Ag

Contact

☎ | 400-999-6126

✉ | cn.market@abclonal.com.cn

🌐 | www.abclonal.com.cn

Product Information

Source

Rabbit

Isotype

IgG

Purification

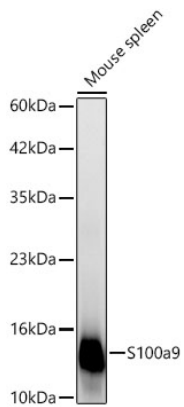
Affinity purification

Storage

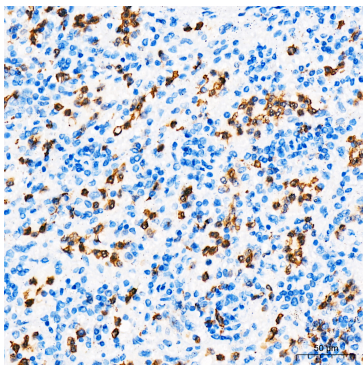
Store at -20°C. Avoid freeze / thaw cycles.

Buffer: PBS with 0.05% proclin300, 50% glycerol, pH7.3.

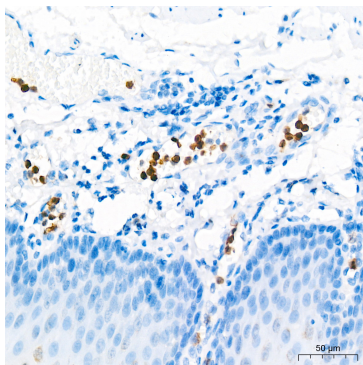
Validation Data



Western blot analysis of lysates from Mouse spleen using S100a9 Rabbit pAb(A25434) at 1:1000 dilution. Secondary antibody: HRP Goat Anti-Rabbit IgG (H+L) (AS014) at 1:10000 dilution. Lysates/proteins: 25 µg per lane. Blocking buffer: 3% nonfat dry milk in TBST. Detection: ECL Basic Kit (RM00020). Exposure time: 10s.



Immunohistochemistry analysis of S100a9 in paraffin-embedded Human spleen tissue using S100a9 Rabbit pAb (A25434) at a dilution of 1:1000 (40x lens). High pressure antigen retrieval was performed with 0.01 M citrate buffer (pH 6.0) prior to IHC staining.



Immunohistochemistry analysis of S100a9 in paraffin-embedded Human esophagus tissue using S100a9 Rabbit pAb (A25434) at a dilution of 1:1000 (40x lens). High pressure antigen retrieval was performed with 0.01 M citrate buffer (pH 6.0) prior to IHC staining.