

# ABflo® 488 Rabbit anti-Mouse CD79b mAb

Catalog No.: A25447

## Basic Information

### Observed MW

### Calculated MW

25kDa

### Category

Primary antibody

### Applications

FC

### Cross-Reactivity

Mouse

### CloneNo number

ARC66113-ABflo488

### Conjugate

ABflo® 488. Ex:491nm. Em:516nm.

## Recommended Dilutions

FC 5 µl per 10<sup>6</sup> cells in  
100 µl volume

## Background

The B lymphocyte antigen receptor is a multimeric complex that includes the antigen-specific component, surface immunoglobulin (Ig). Surface Ig non-covalently associates with two other proteins, Ig-alpha and Ig-beta, which are necessary for expression and function of the B-cell antigen receptor. This gene encodes the Ig-beta protein of the B-cell antigen component. Alternatively spliced transcript variants encoding different isoforms have been described.

## Immunogen Information

### Gene ID

15985

### Swiss Prot

P15530

### Immunogen

Recombinant fusion protein containing a sequence corresponding to amino acids 26-158 of mouse CD79b (NP\_032365.1).

### Synonyms

B29; Igb; Igbeta; Ig-beta

## Contact

☎ | 400-999-6126

✉ | [cn.market@abclonal.com.cn](mailto:cn.market@abclonal.com.cn)

🌐 | [www.abclonal.com.cn](http://www.abclonal.com.cn)

## Product Information

### Source

Rabbit

### Isotype

IgG

### Purification

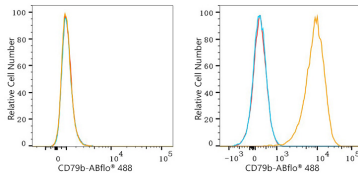
Affinity purification

### Storage

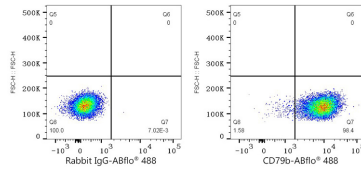
Store at 2-8°C. Avoid freeze.

Buffer: PBS with 0.03% proclin300,0.2% BSA,pH7.3.

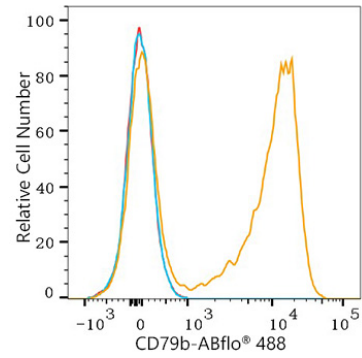
## Validation Data



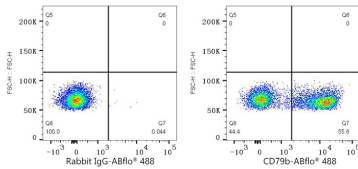
Flow cytometry:  $1 \times 10^6$  C2C12 cells (negative control, left) and A20 cells (right) were surface-stained with ABflo® 488 Rabbit anti-Mouse CD79b mAb (A25447,5  $\mu\text{l}/\text{Test}$ , orange line) or ABflo® 488 Rabbit IgG isotype control (A22069,5  $\mu\text{l}/\text{Test}$ , blue line). Non-fluorescently stained cells were used as blank control (red line).



Flow cytometry:  $1 \times 10^6$  A20 cells were surface-stained with ABflo® 488 Rabbit IgG isotype control (A22069,5  $\mu\text{l}/\text{Test}$ , left) or ABflo® 488 Rabbit anti-Mouse CD79b mAb (A25447,5  $\mu\text{l}/\text{Test}$ , right).



Flow cytometry:  $1 \times 10^6$  C57BL/6 mouse Splenocytes were surface-stained with ABflo® 488 Rabbit anti-Mouse CD79b mAb (A25447,5  $\mu\text{l}/\text{Test}$ , orange line) or ABflo® 488 Rabbit IgG isotype control (A22069,5  $\mu\text{l}/\text{Test}$ , blue line). Non-fluorescently stained C57BL/6 mouse Splenocytes were used as blank control (red line).



Flow cytometry:  $1 \times 10^6$  C57BL/6 mouse Splenocytes were surface-stained with ABflo® 488 Rabbit IgG isotype control (A22069,5  $\mu\text{l}/\text{Test}$ , left) or ABflo® 488 Rabbit anti-Mouse CD79b mAb (A25447,5  $\mu\text{l}/\text{Test}$ , right).