

ABflo® 488 Rabbit anti-Mouse/Rat CD27 mAb

Catalog No.: A25450

Basic Information

Observed MW

Calculated MW

28kDa

Category

Primary antibody

Applications

FC

Cross-Reactivity

Mouse, Rat

CloneNo number

ARC67086-ABflo488

Conjugate

ABflo® 488. Ex:491nm. Em:516nm.

Recommended Dilutions

FC 5 µl per 10⁶ cells in
100 µl volume

Background

Predicted to enable cysteine-type endopeptidase inhibitor activity involved in apoptotic process. Involved in negative regulation of apoptotic process and positive regulation of JNK cascade. Acts upstream of or within negative regulation of T cell apoptotic process. Located in external side of plasma membrane. Is expressed in several structures, including femur; hemolymphoid system; intestine; pituitary gland; and reproductive system. Human ortholog(s) of this gene implicated in lymphoproliferative syndrome 2. Orthologous to human CD27 (CD27 molecule).

Immunogen Information

Gene ID

21940

Swiss Prot

P41272

Immunogen

Recombinant fusion protein containing a sequence corresponding to amino acids 24-182 of mouse CD27 (NP_001028298.1).

Synonyms

S152; Tp55; Tnfrsf7

Contact

☎ | 400-999-6126

✉ | cn.market@abclonal.com.cn

🌐 | www.abclonal.com.cn

Product Information

Source

Rabbit

Isotype

IgG

Purification

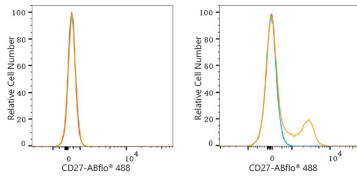
Affinity purification

Storage

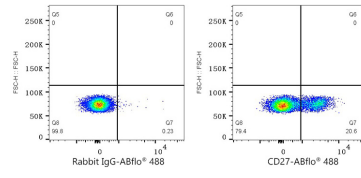
Store at 2-8°C. Avoid freeze.

Buffer: PBS with 0.03% proclin300,0.2% BSA,pH7.3.

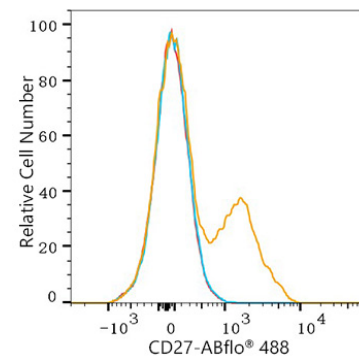
Validation Data



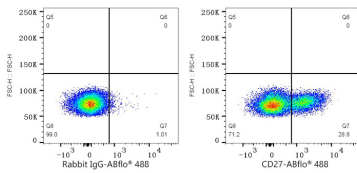
Flow cytometry: 1×10^6 A20 cells (negative control, left) and C57BL/6 mouse Splenocytes (right) were surface-stained with ABflo® 488 Rabbit anti-Mouse/Rat CD27 mAb (A25450,5 μ l/Test, orange line) or ABflo® 488 Rabbit IgG isotype control (A22069,5 μ l/Test, blue line). Non-fluorescently stained cells were used as blank control (red line).



Flow cytometry: 1×10^6 C57BL/6 mouse Splenocytes were surface-stained with ABflo® 488 Rabbit IgG isotype control (A22069,5 μ l/Test, left) or ABflo® 488 Rabbit anti-Mouse/Rat CD27 mAb (A25450,5 μ l/Test, right).



Flow cytometry: 1×10^6 Rat Splenocytes were surface-stained with ABflo® 488 Rabbit anti-Mouse/Rat CD27 mAb (A25450,5 μ l/Test, orange line) or ABflo® 488 Rabbit IgG isotype control (A22069,5 μ l/Test, blue line). Non-fluorescently stained Rat Splenocytes were used as blank control (red line).



Flow cytometry: 1×10^6 Rat Splenocytes were surface-stained with ABflo® 488 Rabbit IgG isotype control (A22069,5 μ l/Test, left) or ABflo® 488 Rabbit anti-Mouse/Rat CD27 mAb (A25450,5 μ l/Test, right).