

# ABflo® 647 Rabbit anti-Mouse/Rat CD27 mAb

Catalog No.: A25451

## Basic Information

### Observed MW

### Calculated MW

28kDa

### Category

Primary antibody

### Applications

FC

### Cross-Reactivity

Mouse, Rat

### CloneNo number

ARC67086-ABflo647

### Conjugate

ABflo® 647. Ex:648nm. Em:664nm.

## Recommended Dilutions

FC 5 µl per 10<sup>6</sup> cells in  
100 µl volume

## Background

Predicted to enable cysteine-type endopeptidase inhibitor activity involved in apoptotic process. Involved in negative regulation of apoptotic process and positive regulation of JNK cascade. Acts upstream of or within negative regulation of T cell apoptotic process. Located in external side of plasma membrane. Is expressed in several structures, including femur; hemolymphoid system; intestine; pituitary gland; and reproductive system. Human ortholog(s) of this gene implicated in lymphoproliferative syndrome 2. Orthologous to human CD27 (CD27 molecule).

## Immunogen Information

### Gene ID

21940

### Swiss Prot

P41272

### Immunogen

Recombinant fusion protein containing a sequence corresponding to amino acids 24-182 of mouse CD27 (NP\_001028298.1).

### Synonyms

S152; Tp55; Tnfrsf7

## Contact

☎ | 400-999-6126

✉ | [cn.market@abclonal.com.cn](mailto:cn.market@abclonal.com.cn)

🌐 | [www.abclonal.com.cn](http://www.abclonal.com.cn)

## Product Information

### Source

Rabbit

### Isotype

IgG

### Purification

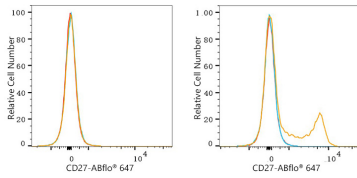
Affinity purification

### Storage

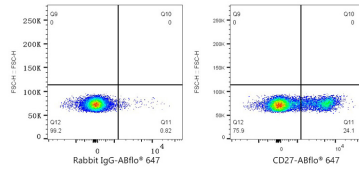
Store at 2-8°C. Avoid freeze.

Buffer: PBS with 0.03% proclin300,0.2% BSA,pH7.3.

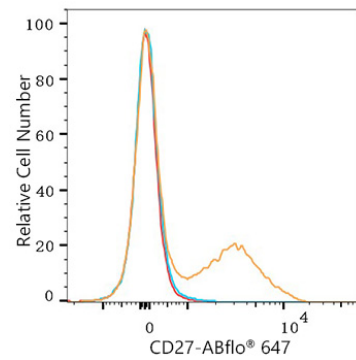
## Validation Data



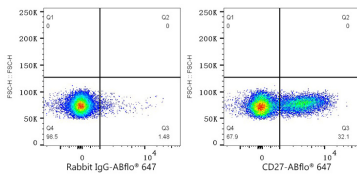
Flow cytometry:  $1 \times 10^6$  A20 cells (negative control, left) and C57BL/6 mouse Splenocytes (right) were surface-stained with ABflo® 647 Rabbit anti-Mouse/Rat CD27 mAb (A25451,5  $\mu$ l/Test, orange line) or ABflo® 647 Rabbit IgG isotype control (A22070,5  $\mu$ l/Test, blue line). Non-fluorescently stained cells were used as blank control (red line).



Flow cytometry:  $1 \times 10^6$  C57BL/6 mouse Splenocytes were surface-stained with ABflo® 647 Rabbit IgG isotype control (A22070,5  $\mu$ l/Test, left) or ABflo® 647 Rabbit anti-Mouse/Rat CD27 mAb (A25451,5  $\mu$ l/Test, right).



Flow cytometry:  $1 \times 10^6$  Rat Splenocytes were surface-stained with ABflo® 647 Rabbit anti-Mouse/Rat CD27 mAb (A25451,5  $\mu$ l/Test, orange line) or ABflo® 647 Rabbit IgG isotype control (A22070,5  $\mu$ l/Test, blue line). Non-fluorescently stained Rat Splenocytes were used as blank control (red line).



Flow cytometry:  $1 \times 10^6$  Rat Splenocytes were surface-stained with ABflo® 647 Rabbit IgG isotype control (A22070,5  $\mu$ l/Test, left) or ABflo® 647 Rabbit anti-Mouse/Rat CD27 mAb (A25451,5  $\mu$ l/Test, right).