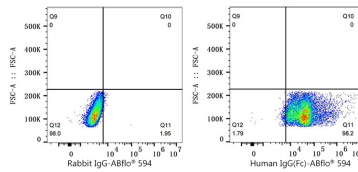
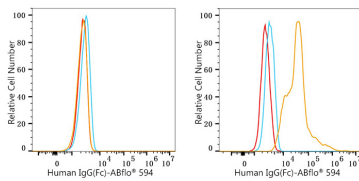


Validation Data



Flow cytometry: 1×10^6 293F cells (negative control, left) and 293F (Transfection, right) cells were intracellularly-stained with ABflo® 594 Rabbit anti-Human IgG (Fc) mAb (A25453,5 $\mu\text{l}/\text{Test}$, orange line) or ABflo® 594 Rabbit IgG isotype control (A23821,5 $\mu\text{l}/\text{Test}$, blue line). Non-fluorescently stained cells were used as blank control (red line).

Flow cytometry: 1×10^6 293F (Transfection) cells were intracellularly-stained with ABflo® 594 Rabbit IgG isotype control (A23821,5 $\mu\text{l}/\text{Test}$, left) or ABflo® 594 Rabbit anti-Human IgG (Fc) mAb (A25453,5 $\mu\text{l}/\text{Test}$, right).