

MF12 Rabbit mAb

Catalog No.: A25456 **Recombinant**

Basic Information

Observed MW

80-90kDa

Calculated MW

32kDa/80kDa

Category

Primary antibody

Applications

WB,FC,ELISA

Cross-Reactivity

Human, Rat

CloneNo number

ARC66603

Background

The protein encoded by this gene is a cell-surface glycoprotein found on melanoma cells. The protein shares sequence similarity and iron-binding properties with members of the transferrin superfamily. The importance of the iron binding function has not yet been identified. This gene resides in the same region of chromosome 3 as members of the transferrin superfamily. Alternative splicing results in two transcript variants.

Recommended Dilutions

WB 1:1000 - 1:4000

FC 1:500 - 1:1000

ELISA Recommended starting concentration is 1 µg/mL. Please optimize the concentration based on your specific assay requirements.

Immunogen Information

Gene ID

4241

Swiss Prot

P08582

Immunogen

Recombinant fusion protein containing a sequence corresponding to amino acids 20-708 of human MF12 (NP_005920.2).

Synonyms

MTf; MF12; MTF1; CD228; MAP97

Contact

☎ | 400-999-6126

✉ | cn.market@abclonal.com.cn

🌐 | www.abclonal.com.cn

Product Information

Source

Rabbit

Isotype

IgG

Purification

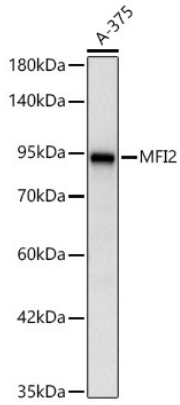
Affinity purification

Storage

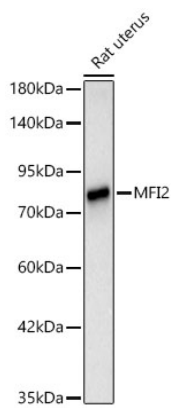
Store at -20°C. Avoid freeze / thaw cycles.

Buffer: PBS with 0.05% proclin300,0.05% BSA,50% glycerol,pH7.3.

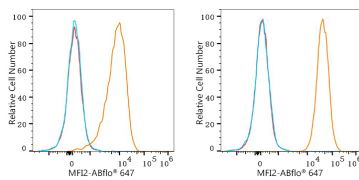
Validation Data



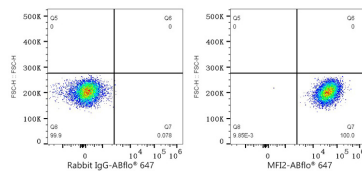
Western blot analysis of lysates from A-375 cells using MF12 Rabbit mAb (A25456) at 1:1000 dilution.
 Secondary antibody: HRP-conjugated Goat anti-Rabbit IgG (H+L) (AS014) at 1:10000 dilution.
 Lysates/proteins: 25 µg per lane.
 Blocking buffer: 3% nonfat dry milk in TBST.
 Detection: ECL Basic Kit (RM00020).
 Exposure time: 20s.



Western blot analysis of lysates from Rat uterus using MF12 Rabbit mAb (A25456) at 1:1000 dilution.
 Secondary antibody: HRP-conjugated Goat anti-Rabbit IgG (H+L) (AS014) at 1:10000 dilution.
 Lysates/proteins: 25 µg per lane.
 Blocking buffer: 3% nonfat dry milk in TBST.
 Detection: ECL Basic Kit (RM00020).
 Exposure time: 90s.



Flow cytometry: 1×10^6 HUVEC cells (Low Expression, left) and A-375 cells (right) were surface-stained with MF12 Rabbit mAb (A25456, 2 µg/mL, orange line) or Rabbit IgG isotype control (AC042, 2 µg/mL, blue line), followed by Alexa Fluor® 647 conjugated goat anti-rabbit pAb staining. Non-fluorescently stained cells were used as blank control (red line).



Flow cytometry: 1×10^6 A-375 cells were surface-stained with Rabbit IgG isotype control (AC042, 2 µg/mL, left) or MF12 Rabbit mAb (A25456, 2 µg/mL, right), followed by Alexa Fluor® 647 conjugated goat anti-rabbit pAb staining.