

CD161 Rabbit mAb

Catalog No.: A25457 Recombinant

Basic Information

Observed MW

30kDa

Calculated MW

25kDa

Category

Primary antibody

Applications

WB,IF/ICC,FC,ELISA

Cross-Reactivity

Human, Mouse, Rat

CloneNo number

ARC66022

Background

Natural killer (NK) cells are lymphocytes that mediate cytotoxicity and secrete cytokines after immune stimulation. Several genes of the C-type lectin superfamily, including the rodent NKR1 family of glycoproteins, are expressed by NK cells and may be involved in the regulation of NK cell function. The KLRB1 protein contains an extracellular domain with several motifs characteristic of C-type lectins, a transmembrane domain, and a cytoplasmic domain. The KLRB1 protein is classified as a type II membrane protein because it has an external C terminus.

Recommended Dilutions

WB 1:3000 - 1:18000

IF/ICC 1:200 - 1:2000

FC 1:500 - 1:1000

ELISA Recommended starting concentration is 1 µg/mL. Please optimize the concentration based on your specific assay requirements.

Immunogen Information

Gene ID

3820

Swiss Prot

Q12918

Immunogen

Recombinant fusion protein containing a sequence corresponding to amino acids 67-225 of human CD161 (NP_002249.1).

Synonyms

NKR; CD161; CLEC5B; NKR-P1; NKR1A; NKR-P1A; hNKR-P1A; KLRB1

Contact

 | 400-999-6126

 | cn.market@abclonal.com.cn
 | www.abclonal.com.cn

Product Information

Source

Rabbit

Isotype

IgG

Purification

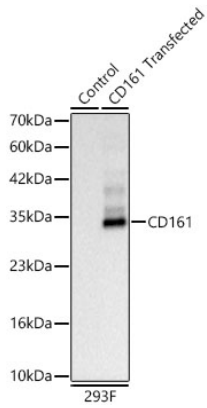
Affinity purification

Storage

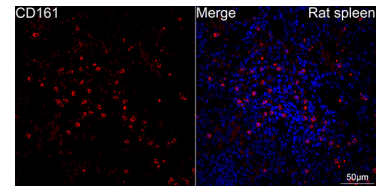
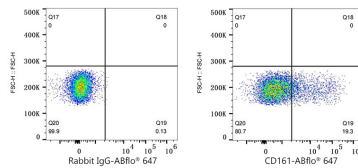
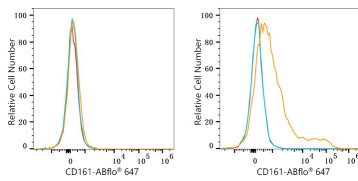
Store at -20°C. Avoid freeze / thaw cycles.

Buffer: PBS with 0.05% proclin300,0.05% BSA,50% glycerol,pH7.3.

Validation Data



Western blot analysis of lysates from wild type (WT) and 293F cells transfected with CD161 using CD161 Rabbit mAb (A25457) at 1:3000 dilution.
 Secondary antibody: HRP-conjugated Goat anti-Rabbit IgG (H+L) (AS014) at 1:10000 dilution.
 Lysates/proteins: 30 µg per lane.
 Blocking buffer: 3% nonfat dry milk in TBST.
 Detection: ECL Basic Kit (RM00020).
 Exposure time: 0.5s.



Flow cytometry: 1×10^6 293T cells (negative control, left) and 293T (Transfection, right) cells were surface-stained with CD161 Rabbit mAb (A25457, 2 µg/mL, orange line) or ABflo® 647 Rabbit IgG isotype control (A22070, 5 µg/mL, blue line), followed by Alexa Fluor® 647 conjugated goat anti-rabbit pAb staining. Non-fluorescently stained cells were used as blank control (red line).

Flow cytometry: 1×10^6 293T (Transfection) cells were surface-stained with ABflo® 647 Rabbit IgG isotype control (A22070, 5 µg/mL, blue line) or CD161 Rabbit mAb (A25457, 2 µg/mL, orange line).

Confocal imaging of paraffin-embedded Rat spleen tissue using CD161 Rabbit mAb (A25457, dilution 1:200) followed by a further incubation with Cy3 Goat Anti-Rabbit IgG (H+L) (AS007, dilution 1:500) (Red). DAPI was used for nuclear staining (Blue). Objective: 40x. Perform high pressure antigen retrieval with 0.01 M citrate buffer (pH 6.0) prior to IF staining.