

# Myosin heavy chain Rabbit pAb

Catalog No.: A25464

## Basic Information

### Observed MW

Refer to figures

### Calculated MW

223kDa

### Category

Primary antibody

### Applications

ELISA, IHC-P, IF/ICC

### Cross-Reactivity

Mouse, Rat

## Background

Cardiac muscle myosin is a hexamer consisting of two heavy chain subunits, two light chain subunits, and two regulatory subunits. This gene encodes the alpha heavy chain subunit of cardiac myosin. The gene is located approximately 4kb downstream of the gene encoding the beta heavy chain subunit of cardiac myosin. Mutations in this gene cause familial hypertrophic cardiomyopathy and atrial septal defect 3.

## Recommended Dilutions

IHC-P 1:50 - 1:200 IF/ICC 1:50 -  
1:200

## Immunogen Information

### Gene ID

4624/4625

### Swiss Prot

P13533/P12883

### Immunogen

A synthetic peptide corresponding to a sequence within amino acids 1730-1830 of human Myosin heavy chain (NP\_002462.2).

### Synonyms

ASD3; MYHC; SSS3; CMH14; MYHCA; CMD1EE; alpha-MHC

## Contact

☎ | 400-999-6126

✉ | [cn.market@abclonal.com.cn](mailto:cn.market@abclonal.com.cn)

🌐 | [www.abclonal.com.cn](http://www.abclonal.com.cn)

## Product Information

### Source

Rabbit

### Isotype

IgG

### Purification

Affinity purification

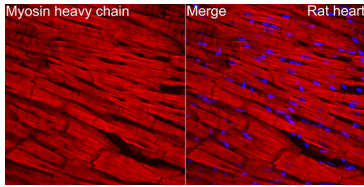
### Storage

Store at -20°C. Avoid freeze / thaw cycles.

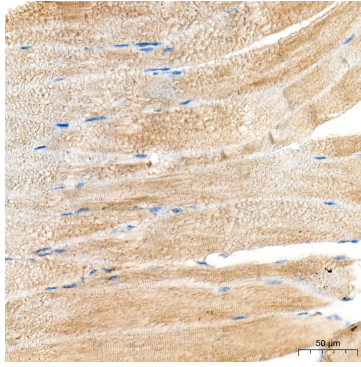
Buffer: PBS with 0.05% proclin300, 50% glycerol, pH7.3.

## Validation Data

---



Immunofluorescence analysis of paraffin-embedded Rat heart tissue using Myosin heavy chain Rabbit pAb(A25464) at a dilution of 1:100 (40x lens). Secondary antibody: Cy3 Goat Anti-Rabbit IgG (H+L)(AS007) at 1:500 dilution. Blue: DAPI for nuclear staining. Perform high pressure antigen retrieval with 0.01 M citrate buffer (pH 6.0) prior to IF staining.



Immunohistochemistry analysis of Myosin heavy chain in paraffin-embedded Mouse skeletal muscle tissue using Myosin heavy chain Rabbit pAb (A25464) at a dilution of 1:200 (40x lens). High pressure antigen retrieval was performed with 0.01 M citrate buffer (pH 6.0) prior to IHC staining.