

Langerin/CD207 Rabbit pAb

Catalog No.: A25467

Basic Information

Observed MW

Refer to figures

Calculated MW

37kDa

Category

Primary antibody

Applications

ELISA, IHC-P

Cross-Reactivity

Human

Background

The protein encoded by this gene is expressed only in Langerhans cells which are immature dendritic cells of the epidermis and mucosa. It is localized in the Birbeck granules, organelles present in the cytoplasm of Langerhans cells and consisting of superimposed and zippered membranes. It is a C-type lectin with mannose binding specificity, and it has been proposed that mannose binding by this protein leads to internalization of antigen into Birbeck granules and providing access to a nonclassical antigen-processing pathway. Mutations in this gene result in Birbeck granules deficiency or loss of sugar binding activity.

Recommended Dilutions

IHC-P 1:50 0- 1:1000

Immunogen Information

Gene ID

50489

Swiss Prot

Q9UJ71

Immunogen

Recombinant fusion protein containing a sequence corresponding to amino acids 65-328 of human Langerin/CD207 (NP_056532.4).

Synonyms

CLEC4K; Langerin/CD207

Contact

☎ | 400-999-6126

✉ | cn.market@abclonal.com.cn

🌐 | www.abclonal.com.cn

Product Information

Source

Rabbit

Isotype

IgG

Purification

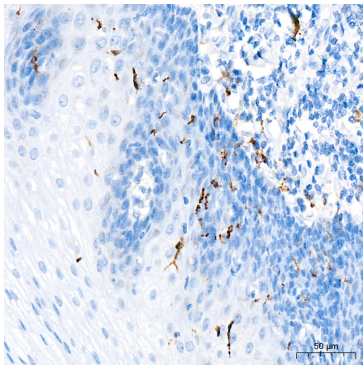
Affinity purification

Storage

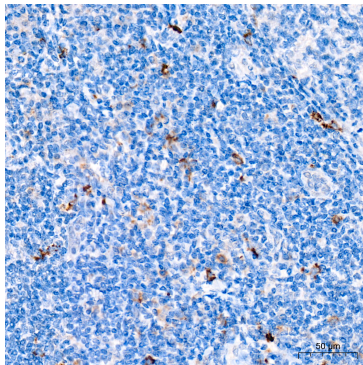
Store at -20°C. Avoid freeze / thaw cycles.

Buffer: PBS with 0.05% proclin300, 50% glycerol, pH7.3.

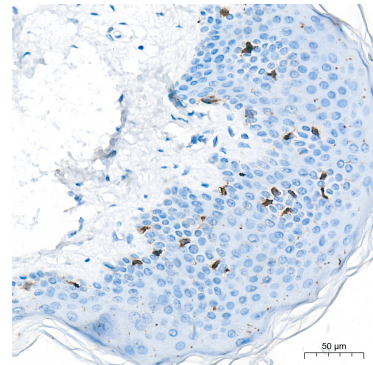
Validation Data



Immunohistochemistry analysis of Langerin/CD207 in paraffin-embedded Human esophagus tissue using Langerin/CD207 Rabbit pAb (A25467) at a dilution of 1:1000 (40x lens). High pressure antigen retrieval was performed with 0.01 M Tris-EDTA buffer (pH 9.0) prior to IHC staining.



Immunohistochemistry analysis of Langerin/CD207 in paraffin-embedded Human tonsil tissue using Langerin/CD207 Rabbit pAb (A25467) at a dilution of 1:1000 (40x lens). High pressure antigen retrieval was performed with 0.01 M Tris-EDTA buffer (pH 9.0) prior to IHC staining.



Immunohistochemistry analysis of Langerin/CD207 in paraffin-embedded Human skin tissue using Langerin/CD207 Rabbit pAb (A25467) at a dilution of 1:1000 (40x lens). High pressure antigen retrieval was performed with 0.01 M Tris-EDTA buffer (pH 9.0) prior to IHC staining.