

CD27 Rabbit mAb

Catalog No.: A25469 **Recombinant**

Basic Information

Observed MW

Calculated MW

28kDa

Category

Primary antibody

Applications

ELISA,FC

Cross-Reactivity

Mouse, Rat

CloneNo number

ARC67086

Background

Predicted to enable cysteine-type endopeptidase inhibitor activity involved in apoptotic process. Involved in negative regulation of apoptotic process and positive regulation of JNK cascade. Acts upstream of or within negative regulation of T cell apoptotic process. Located in external side of plasma membrane. Is expressed in several structures, including femur; hemolymphoid system; intestine; pituitary gland; and reproductive system. Human ortholog(s) of this gene implicated in lymphoproliferative syndrome 2. Orthologous to human CD27 (CD27 molecule).

Recommended Dilutions

FC 1:500 - 1:1000

Immunogen Information

Gene ID

21940

Swiss Prot

P41272

Immunogen

Recombinant fusion protein containing a sequence corresponding to amino acids 24-182 of mouse CD27 (NP_001028298.1).

Synonyms

S152; Tp55; Tnfrsf7; CD27

Contact

☎ | 400-999-6126

✉ | cn.market@abclonal.com.cn

🌐 | www.abclonal.com.cn

Product Information

Source

Rabbit

Isotype

IgG

Purification

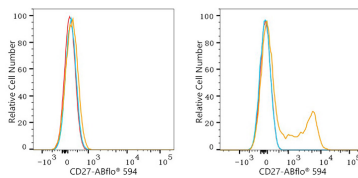
Affinity purification

Storage

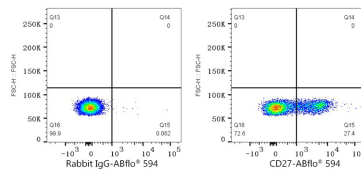
Store at -20°C. Avoid freeze / thaw cycles.

Buffer: PBS with 0.05% proclin300,0.05% BSA,50% glycerol,pH7.3.

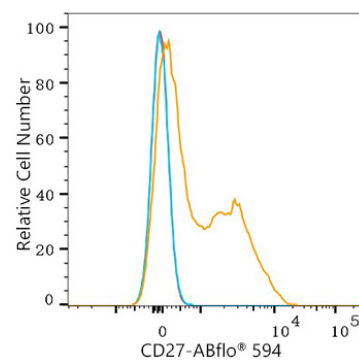
Validation Data



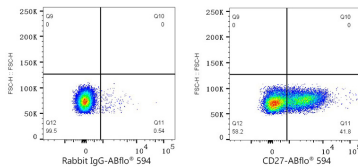
Flow cytometry: 1×10^6 A20 cells (negative control, left) and C57BL/6 mouse Splenocytes (right) were surface-stained with CD27 Rabbit mAb (A25469, 2 $\mu\text{g/mL}$, orange line) or ABflo® 594 Rabbit IgG isotype control (A23821, 5 $\mu\text{l/Test}$, blue line), followed by ABflo® 594 conjugated goat anti-rabbit pAb staining. Non-fluorescently stained cells were used as blank control (red line).



Flow cytometry: 1×10^6 C57BL/6 mouse Splenocytes were surface-stained with ABflo® 594 Rabbit IgG isotype control (A23821, 5 $\mu\text{l/Test}$, left) or CD27 Rabbit mAb (A25469, 2 $\mu\text{g/mL}$, right).



Flow cytometry: 1×10^6 Rat Splenocytes were surface-stained with CD27 Rabbit mAb (A25469, 2 $\mu\text{g/mL}$, orange line) or ABflo® 594 Rabbit IgG isotype control (A23821, 5 $\mu\text{l/Test}$, blue line), followed by ABflo® 594 conjugated goat anti-rabbit pAb staining. Non-fluorescently stained Rat Splenocytes were used as blank control (red line).



Flow cytometry: 1×10^6 Rat Splenocytes were surface-stained with ABflo® 594 Rabbit IgG isotype control (A23821, 5 $\mu\text{l/Test}$, left) or CD27 Rabbit mAb (A25469, 2 $\mu\text{g/mL}$, right).