

NF-kB p65/RelA Rabbit pAb

Catalog No.: A2547

165 Publications

Basic Information

Observed MW

65kDa

Calculated MW

60kDa

Category

Primary antibody

Applications

WB, IHC-P, IF/ICC, ELISA

Cross-Reactivity

Human, Mouse, Rat

Background

NF-kappa-B is a ubiquitous transcription factor involved in several biological processes. It is held in the cytoplasm in an inactive state by specific inhibitors. Upon degradation of the inhibitor, NF-kappa-B moves to the nucleus and activates transcription of specific genes. NF-kappa-B is composed of NFKB1 or NFKB2 bound to either REL, RELA, or RELB. The most abundant form of NF-kappa-B is NFKB1 complexed with the product of this gene, RELA. Four transcript variants encoding different isoforms have been found for this gene.

Recommended Dilutions

WB	1:500 - 1:2000
IHC-P	1:100 - 1:500
IF/ICC	1:50 - 1:200
ELISA	Recommended starting concentration is 1 µg/mL. Please optimize the concentration based on your specific assay requirements.

Immunogen Information

Gene ID

5970

Swiss Prot

Q04206

Immunogen

Recombinant protein (or fragment). This information is considered to be commercially sensitive.

Synonyms

p65; CMCU; NFKB3; AIF3BL3; NF-kB p65/RelA

Contact

☎	400-999-6126
✉	cn.market@abclonal.com.cn
🌐	www.abclonal.com.cn

Product Information

Source

Rabbit

Isotype

IgG

Purification

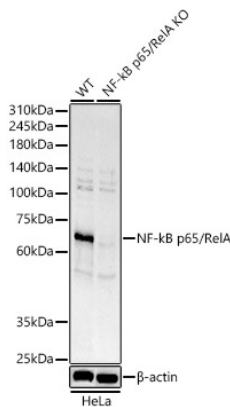
Affinity purification

Storage

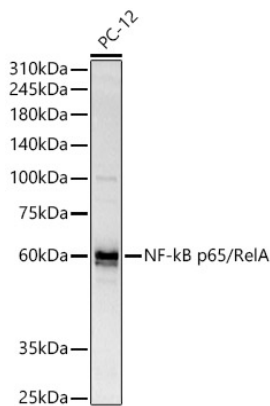
Store at -20°C. Avoid freeze / thaw cycles.

Buffer: PBS containing 50% glycerol, preserved with proclin300 or sodium azide (as specified on the Certificate of Analysis), pH 7.3.

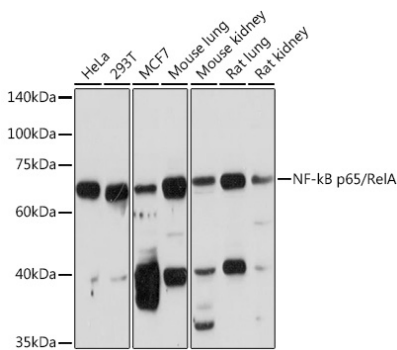
Validation Data



Western blot analysis of lysates from wild type (WT) and NF- κ B p65/RelA knockout (KO) HeLa (KO) cells, using NF- κ B p65/RelA Rabbit pAb (A2547) at 1:2000 dilution.
Secondary antibody: HRP-conjugated Goat anti-Rabbit IgG (H+L) (AS014) at 1:10000 dilution.
Lysates/proteins: 25 μ g per lane.
Blocking buffer: 3% nonfat dry milk in TBST.
Detection: ECL Basic Kit (RM00020).
Exposure time: 20s.

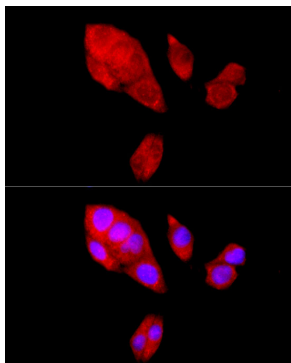


Western blot analysis of various lysates, using NF- κ B p65/RelA Rabbit pAb (A2547) at 1:2000 dilution.
Secondary antibody: HRP-conjugated Goat anti-Rabbit IgG (H+L) (AS014) at 1:10000 dilution.
Lysates/proteins: 25 μ g per lane.
Blocking buffer: 3% nonfat dry milk in TBST.
Detection: ECL Basic Kit (RM00020).
Exposure time: 20s.

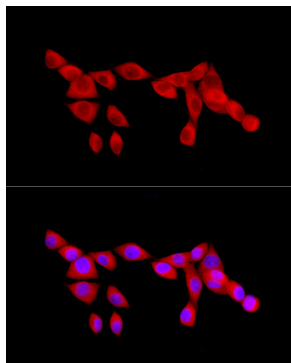


Western blot analysis of various lysates using NF- κ B p65/RelA Rabbit pAb (A2547) at 1:1000 dilution.
Secondary antibody: HRP-conjugated Goat anti-Rabbit IgG (H+L) (AS014) at 1:10000 dilution.
Lysates/proteins: 25 μ g per lane.
Blocking buffer: 3% nonfat dry milk in TBST.
Detection: ECL Basic Kit (RM00020).
Exposure time: 180s.

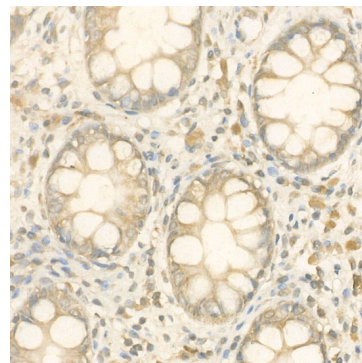
Validation Data



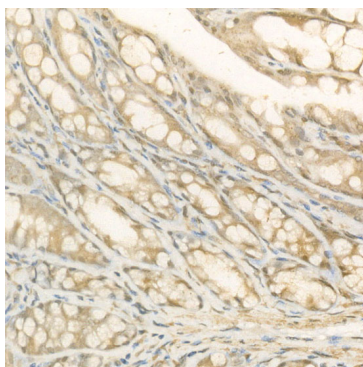
Immunofluorescence analysis of HepG2 cells using NF-kB p65/RelA Rabbit pAb (A2547) at dilution of 1:200 (40x lens). Secondary antibody: Cy3-conjugated Goat anti-Rabbit IgG (H+L) (AS007) at 1:500 dilution. Blue: DAPI for nuclear staining.



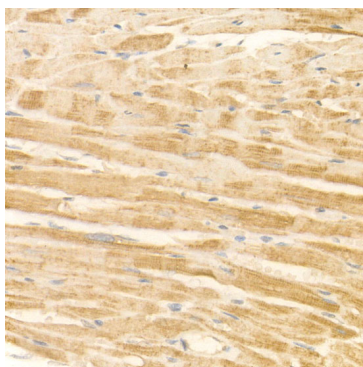
Immunofluorescence analysis of NIH/3T3 cells using NF-kB p65/RelA Rabbit pAb (A2547) at dilution of 1:200 (40x lens). Secondary antibody: Cy3-conjugated Goat anti-Rabbit IgG (H+L) (AS007) at 1:500 dilution. Blue: DAPI for nuclear staining.



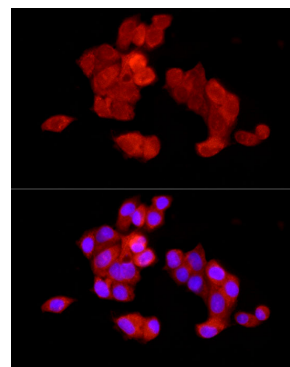
Immunohistochemistry analysis of paraffin-embedded Human colon using NF-kB p65/RelA Rabbit pAb (A2547) at dilution of 1:300 (40x lens). High pressure antigen retrieval performed with 0.01M Citrate buffer (pH 6.0) prior to IHC staining.



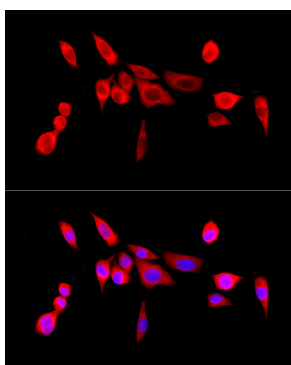
Immunohistochemistry analysis of paraffin-embedded Mouse colon using NF-kB p65/RelA Rabbit pAb (A2547) at dilution of 1:300 (40x lens). High pressure antigen retrieval performed with 0.01M Citrate buffer (pH 6.0) prior to IHC staining.



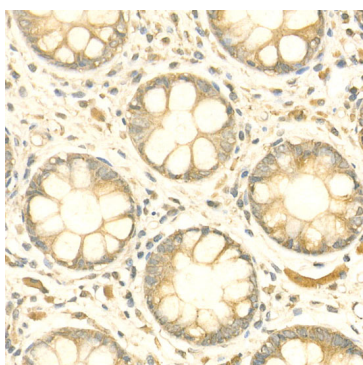
Immunohistochemistry analysis of paraffin-embedded Rat heart using NF-kB p65/RelA Rabbit pAb (A2547) at dilution of 1:300 (40x lens). High pressure antigen retrieval performed with 0.01M Citrate buffer (pH 6.0) prior to IHC staining.



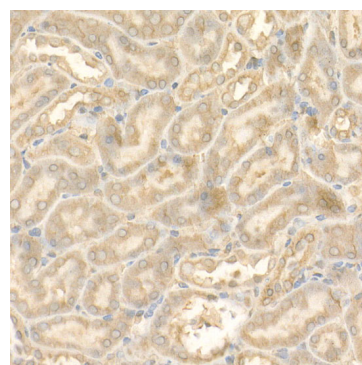
Immunofluorescence analysis of HepG2 cells using [KO Validated] NF-kB p65/RelA Rabbit pAb (A2547) at dilution of 1:200 (40x lens). Secondary antibody: Cy3-conjugated Goat anti-Rabbit IgG (H+L) (AS007) at 1:500 dilution. Blue: DAPI for nuclear staining.



Immunofluorescence analysis of NIH/3T3 cells using [KO Validated] NF-kB p65/RelA Rabbit pAb (A2547) at dilution of 1:200 (40x lens). Secondary antibody: Cy3-conjugated Goat anti-Rabbit IgG (H+L) (AS007) at 1:500 dilution. Blue: DAPI for nuclear staining.

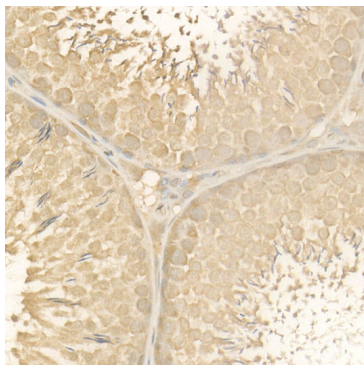


Immunohistochemistry analysis of paraffin-embedded Human colon using [KO Validated] NF-kB p65/RelA Rabbit pAb (A2547) at dilution of 1:200 (40x lens). High pressure antigen retrieval performed with 0.01M Citrate buffer (pH 6.0) prior to IHC staining.



Immunohistochemistry analysis of paraffin-embedded Mouse kidney using [KO Validated] NF-kB p65/RelA Rabbit pAb (A2547) at dilution of 1:200 (40x lens). High pressure antigen retrieval performed with 0.01M Citrate buffer (pH 6.0) prior to IHC staining.

Validation Data



Immunohistochemistry analysis of paraffin-embedded Rat testis using [KO Validated] NF-kB p65/RelA Rabbit pAb (A2547) at dilution of 1:200 (40x lens). High pressure antigen retrieval performed with 0.01M Citrate buffer (pH 6.0) prior to IHC staining.