

ABflo® 488 Rabbit anti-Mouse CD24 mAb

Catalog No.: A25470

Basic Information

Observed MW

Refer to figures

Calculated MW

8kDa

Category

Primary antibody

Applications

IF/ICC,IF-P,FC

Cross-Reactivity

Mouse

CloneNo number

ARC66569

Conjugate

ABflo® 488. Ex:491nm. Em:516nm.

Recommended Dilutions

IF/ICC 1:50 - 1:200

IF-P 1:50 - 1:200

FC 5 µl per 10⁶ cells in
100 µl volume

Background

CD24, also known as heat stable antigen HSA, is a P-selectin ligand involved in adhesion. It is a GPI-anchored glycoprotein expressed on many types of cells, including hematopoietic cells, neural cells, and epithelial cells. CD24 is widely used to delineate stages of lymphocyte development. It also binds to Siglec-10 in humans or Siglec-G in mice. CD24 is frequently used as a marker to identify and isolate cancer stem cells in various cancer types.

Immunogen Information

Gene ID

12484

Swiss Prot

P24807

Immunogen

Recombinant protein (or fragment). This information is considered to be commercially sensitive.

Synonyms

HSA; Cd24; Ly-52; nectadrin

Contact

☎ | 400-999-6126

✉ | cn.market@abclonal.com.cn

🌐 | www.abclonal.com.cn

Product Information

Source

Rabbit

Isotype

IgG

Purification

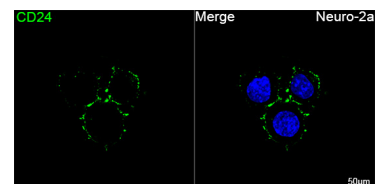
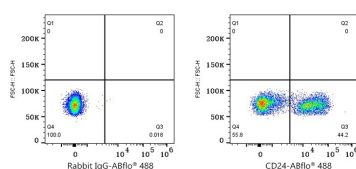
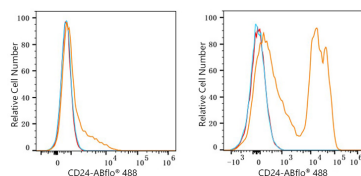
Affinity purification

Storage

Store at 2-8°C. Avoid freeze.

Buffer: PBS containing 0.2% BSA, preserved with proclin300 or sodium azide (as specified on the Certificate of Analysis), pH 7.3.

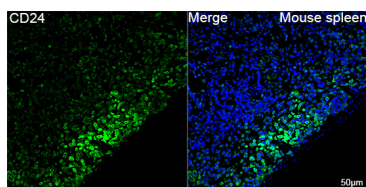
Validation Data



Flow cytometry: 1×10^6 RAW 264.7 cells (Low Expression, left) and C57BL/6 mouse Splenocytes (right) were surface-stained with ABflo® 488 Rabbit anti-Mouse CD24 mAb (A25470, 5 µl/Test, orange line) or ABflo® 488 Rabbit IgG isotype control (A22069, 5 µl/Test, blue line). Non-fluorescently stained cells were used as blank control (red line).

Flow cytometry: 1×10^6 C57BL/6 mouse Splenocytes were surface-stained with ABflo® 488 Rabbit IgG isotype control (A22069, 5 µl/Test, left) or ABflo® 488 Rabbit anti-Mouse CD24 mAb (A25470, 5 µl/Test, right).

Confocal imaging of Neuro-2a cells using ABflo® 488 Rabbit anti-Mouse CD24 mAb (A25470, dilution 1:50). DAPI was used for nuclear staining (Blue). Objective: 100x.



Confocal imaging of paraffin-embedded Mouse spleen tissue using ABflo® 488 Rabbit anti-Mouse CD24 mAb (A25470, dilution 1:50). DAPI was used for nuclear staining (Blue). High pressure antigen retrieval performed with 0.01M Citrate Buffer (pH 6.0) prior to IF staining. Objective: 40x.