

ABflo® 647 Rabbit anti-Mouse CD66a/CEACAM1 mAb

Catalog No.: A25477

Basic Information

Observed MW

Calculated MW

57kDa/50kDa/37kDa/30kDa

Category

Primary antibody

Applications

FC

Cross-Reactivity

Mouse

CloneNo number

ARC65927

Conjugate

ABflo® 647. Ex:648nm. Em:664nm.

Background

Enables several functions, including signaling receptor binding activity; virion binding activity; and virus receptor activity. Involved in several processes, including common myeloid progenitor cell proliferation; granulocyte colony-stimulating factor signaling pathway; and negative regulation of macromolecule metabolic process. Acts upstream of or within several processes, including modulation by host of viral process; regulation of T cell activation; and regulation of intracellular signal transduction. Located in cell projection membrane; external side of plasma membrane; and extracellular space. Is expressed in several structures, including alimentary system; central nervous system; extraembryonic component; genitourinary system; and skeleton. Orthologous to several human genes including CEACAM1 (CEA cell adhesion molecule 1).

Recommended Dilutions

FC 5 µl per 10⁶ cells in
100 µl volume

Immunogen Information

Gene ID

26365

Swiss Prot

P31809

Immunogen

Recombinant protein (or fragment). This information is considered to be commercially sensitive.

Synonyms

Bgp; Cc1; Hv2; Bgp1; Cea1; Cea7; Hv-2; MHVR; bb-1; C-CAM; CD66a; Cea-1; Cea-7; MHVR1; Mhv-1; mCEA1; mmCGM1; mmCGM2; mmCGM1a

Contact

☎ | 400-999-6126

✉ | cn.market@abclonal.com.cn

🌐 | www.abclonal.com.cn

Product Information

Source

Rabbit

Isotype

IgG

Purification

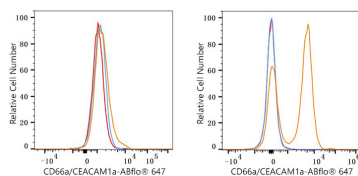
Affinity purification

Storage

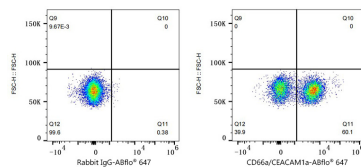
Store at 2-8°C. Avoid freeze.

Buffer: PBS containing 0.2% BSA, preserved with proclin300 or sodium azide (as specified on the Certificate of Analysis), pH 7.3.

Validation Data



Flow cytometry: 1×10^6 3T3-L1 cells (Low Expression, left) and C57BL/6 mouse Splenocytes (right) were surface-stained with ABflo® 647 Rabbit anti-Mouse CD66a/CEACAM1a mAb (A25477, 5 μ l/Test, orange line) or ABflo® 647 Rabbit IgG isotype control (A22070, 5 μ l/Test, blue line). Non-fluorescently stained cells were used as blank control (red line).



Flow cytometry: 1×10^6 C57BL/6 mouse Splenocytes were surface-stained with ABflo® 647 Rabbit IgG isotype control (A22070, 5 μ l/Test, left) or ABflo® 647 Rabbit anti-Mouse CD66a/CEACAM1a mAb (A25477, 5 μ l/Test, right).