

# ABflo® 647 Rabbit anti-Human P-cadherin mAb

Catalog No.: A25479

## Basic Information

### Observed MW

### Calculated MW

87kDa/91kDa

### Category

Primary antibody

### Applications

FC

### Cross-Reactivity

Human

### CloneNo number

ARC66488-ABflo647

### Conjugate

ABflo® 647. Ex:648nm. Em:664nm.

## Recommended Dilutions

FC 5 µl per 10<sup>6</sup> cells in  
100 µl volume

## Background

This gene encodes a classical cadherin of the cadherin superfamily. Alternative splicing results in multiple transcript variants, at least one of which encodes a preproprotein that is proteolytically processed to generate the mature glycoprotein. This calcium-dependent cell-cell adhesion protein is comprised of five extracellular cadherin repeats, a transmembrane region and a highly conserved cytoplasmic tail. This gene is located in a gene cluster in a region on the long arm of chromosome 16 that is involved in loss of heterozygosity events in breast and prostate cancer. In addition, aberrant expression of this protein is observed in cervical adenocarcinomas. Mutations in this gene are associated with hypotrichosis with juvenile macular dystrophy and ectodermal dysplasia, ectrodactyly, and macular dystrophy syndrome (EEMS).

## Immunogen Information

### Gene ID

1001

### Swiss Prot

P22223

### Immunogen

Recombinant fusion protein containing a sequence corresponding to amino acids 108-654 of human P-cadherin (NP\_001784.2).

### Synonyms

CDHP; HJMD; PCAD

## Contact

☎ | 400-999-6126

✉ | [cn.market@abclonal.com.cn](mailto:cn.market@abclonal.com.cn)

🌐 | [www.abclonal.com.cn](http://www.abclonal.com.cn)

## Product Information

### Source

Rabbit

### Isotype

IgG

### Purification

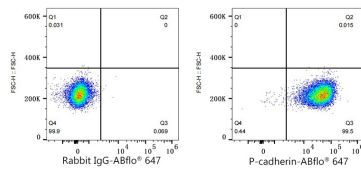
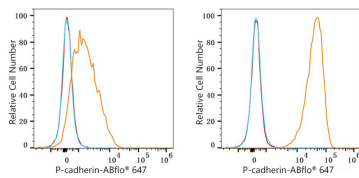
Affinity purification

### Storage

Store at 2-8°C. Avoid freeze.

Buffer: PBS with 0.03% proclin300,0.2% BSA,pH7.3.

## Validation Data



Flow cytometry:  $1 \times 10^6$  MCF7 cells (Low Expression, left) and A-431 cells (right) were surface-stained with ABflo® 647 Rabbit anti-Human P-cadherin mAb (A25479, 5  $\mu$ l/Test, orange line) or ABflo® 647 Rabbit IgG isotype control (A22070, 5  $\mu$ l/Test, blue line). Non-fluorescently stained cells were used as blank control (red line).

Flow cytometry:  $1 \times 10^6$  A-431 cells were surface-stained with ABflo® 647 Rabbit IgG isotype control (A22070, 5  $\mu$ l/Test, left) or ABflo® 647 Rabbit anti-Human P-cadherin mAb (A25479, 5  $\mu$ l/Test, right).