

ABflo® 488 Rat anti-Mouse MHC Class II (I-A/I-E) mAb

Catalog No.: A25481

Basic Information

Observed MW

Calculated MW

26kDa/30kDa/32kDa

Category

Primary antibody

Applications

FC

Cross-Reactivity

Mouse

CloneNo number

ATC50002-ABf488

Conjugate

ABflo® 488. Ex:491nm. Em:516nm.

Recommended Dilutions

FC 5 µl per 10⁶ cells in
100 µl volume

Background

Predicted to enable several functions, including MHC class II receptor activity; peptide antigen binding activity; and signaling receptor binding activity. Involved in response to interferon-gamma. Acts upstream of or within antigen processing and presentation of exogenous peptide antigen via MHC class II. Predicted to be located in external side of plasma membrane and immunological synapse. Predicted to be part of MHC class II protein complex. Predicted to be active in late endosome membrane and lysosomal membrane. Is expressed in lung. Human ortholog(s) of this gene implicated in several diseases, including asthma (multiple); autoimmune disease (multiple); bacterial infectious disease (multiple); eye disease (multiple); and sarcoidosis (multiple). Orthologous to human HLA-DRB1 (major histocompatibility complex, class II, DR beta 1) and HLA-DRB5 (major histocompatibility complex, class II, DR beta 5).

Immunogen Information

Gene ID

14969/14961/381091/14960

Swiss Prot

P18468/P06342/Q3U060/P14435

Immunogen

Recombinant protein of mouse MHC Class II (I-A/I-E).

Synonyms

Eb; Ia4; H2Eb; Ia-4; H-2Eb;IAb; Ia2; Ia-2; Abeta; H-2Ab; H2-Ab; Rmcs1; I-Abeta; Ia5; Ia-5; H-2Eb2; Iebeta2; A130038H09Rik; Ia1; H2Aa; Ia-1; H-2Aa; Aalpha; IAalpha; I-Aalpha

Contact

☎ | 400-999-6126

✉ | cn.market@abclonal.com.cn

🌐 | www.abclonal.com.cn

Product Information

Source

Rat

Isotype

IgG

Purification

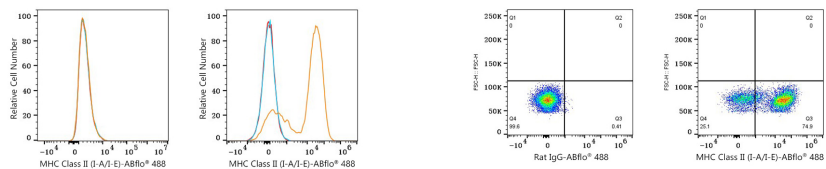
Affinity purification

Storage

Store at 2-8°C. Avoid freeze.

Buffer: PBS with 0.03% proclin300,pH7.3.

Validation Data



Flow cytometry: 1×10^6 Neuro-2a cells (negative control, left) and C57BL/6 mouse Splenocytes (right) were surface-stained with ABflo® 488 Rat anti-Mouse MHC Class II (I-A/I-E) mAb (A25481,5 μ l/Test, orange line) or ABflo® 488 Rat IgG isotype control (2 μ g/Test, blue line). Non-fluorescently stained cells were used as blank control (red line).

Flow cytometry: 1×10^6 C57BL/6 mouse Splenocytes were surface-stained with ABflo® 488 Rat IgG isotype control (2 μ g/Test, left) or ABflo® 488 Rat anti-Mouse MHC Class II (I-A/I-E) mAb (A25481,5 μ l/Test, right).