

# ABflo® 594 Rat anti-Mouse MHC Class II (I-A/I-E) mAb

Catalog No.: A25483

## Basic Information

### Observed MW

### Calculated MW

30kDa/32kDa/26kDa

### Category

Primary antibody

### Applications

FC

### Cross-Reactivity

Mouse

### CloneNo number

ATC50002-ABf594

### Conjugate

ABflo® 594. Ex:588nm. Em:604nm.

## Recommended Dilutions

FC 5 µl per 10<sup>6</sup> cells in  
100 µl volume

## Background

Predicted to enable several functions, including MHC class II receptor activity; peptide antigen binding activity; and signaling receptor binding activity. Involved in response to interferon-gamma. Acts upstream of or within antigen processing and presentation of exogenous peptide antigen via MHC class II. Predicted to be located in external side of plasma membrane and immunological synapse. Predicted to be part of MHC class II protein complex. Predicted to be active in late endosome membrane and lysosomal membrane. Is expressed in lung. Human ortholog(s) of this gene implicated in several diseases, including asthma (multiple); autoimmune disease (multiple); bacterial infectious disease (multiple); eye disease (multiple); and sarcoidosis (multiple). Orthologous to human HLA-DRB1 (major histocompatibility complex, class II, DR beta 1) and HLA-DRB5 (major histocompatibility complex, class II, DR beta 5).

## Immunogen Information

### Gene ID

14969/14961/381091/14960

### Swiss Prot

P18468/P06342/Q3U060/P14435

### Immunogen

Recombinant protein of mouse MHC Class II (I-A/I-E).

### Synonyms

Eb; Ia4; H2Eb; Ia-4; H-2Eb;IAb; Ia2; Ia-2; Abeta; H-2Ab; H2-Ab; Rmcs1; I-Abeta; Ia5; Ia-5; H-2Eb2; Iebeta2; A130038H09Rik; Ia1; H2Aa; Ia-1; H-2Aa; Aalpha; IAalpha; I-Aalpha

## Contact

☎ | 400-999-6126

✉ | [cn.market@abclonal.com.cn](mailto:cn.market@abclonal.com.cn)

🌐 | [www.abclonal.com.cn](http://www.abclonal.com.cn)

## Product Information

### Source

Rat

### Isotype

IgG

### Purification

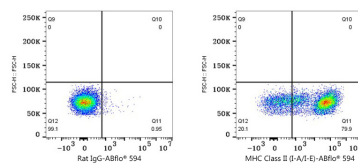
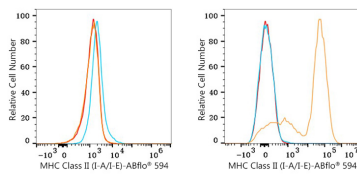
Affinity purification

### Storage

Store at 2-8°C. Avoid freeze.

Buffer: PBS with 0.03% proclin300,pH7.3.

## Validation Data



Flow cytometry:  $1 \times 10^6$  Neuro-2a cells (negative control, left) and C57BL/6 mouse splenocytes (right) were surface-stained with ABflo® 594 Rat anti-Mouse MHC Class II (I-A/I-E) mAb (A25483, 5 µl/Test, orange line) or ABflo® 594 Rat IgG isotype control (2 µg/Test, blue line). Non-fluorescently stained cells were used as blank control (red line).

Flow cytometry:  $1 \times 10^6$  C57BL/6 mouse splenocytes were surface-stained with ABflo® 594 Rat IgG isotype control (2 µg/Test, left) or ABflo® 594 Rat anti-Mouse MHC Class II (I-A/I-E) mAb (A25483, 5 µl/Test, right).