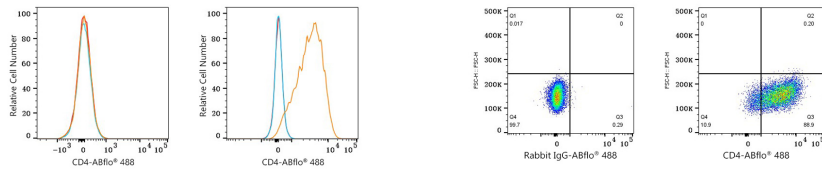


Validation Data



Flow cytometry: 1×10^6 Jurkat cells (negative control, left) and Daudi cells (right) were surface-stained with ABflo[®] 488 Mouse Anti-Human CD4 mAb ($5 \mu\text{l}/\text{Test}$, orange line) or ABflo[®] 488 Mouse IgG 1 isotype control ($5 \mu\text{l}/\text{Test}$, blue line). Non-fluorescently stained cells were used as blank control (red line).

Flow cytometry: 1×10^6 Daudi cells were surface-stained with ABflo[®] 488 Mouse IgG 1 isotype control ($5 \mu\text{l}/\text{Test}$, left) or ABflo[®] 488 Mouse Anti-Human CD4 mAb ($5 \mu\text{l}/\text{Test}$, right).