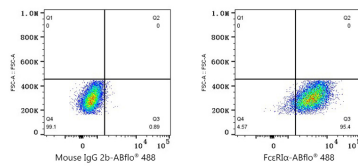
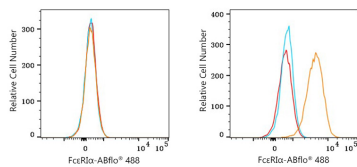


Validation Data



Flow cytometry: 1×10^6 MOLT-4 cells (negative control, left) and HEL cells (right) were surface-stained with ABflo® 488 Mouse Anti-Human FcεR1α mAb (5 μl/Test, orange line) or ABflo® 488 Mouse IgG 2b isotype control (A25490, 5 μl/Test, blue line). Non-fluorescently stained cells were used as blank control (red line).

Flow cytometry: 1×10^6 HEL cells were surface-stained with ABflo® 488 Mouse IgG 2b isotype control (A25490, 5 μl/Test, left) or ABflo® 488 Mouse Anti-Human FcεR1α mAb (5 μl/Test, right).