

MMP14 Rabbit pAb

Catalog No.: A25497

Basic Information

Observed MW

62kDa

Calculated MW

66kDa

Category

Primary antibody

Applications

ELISA, WB, IF/ICC

Cross-Reactivity

Human, Mouse

Background

Proteins of the matrix metalloproteinase (MMP) family are involved in the breakdown of extracellular matrix in normal physiological processes, such as embryonic development, reproduction, and tissue remodeling, as well as in disease processes, such as arthritis and metastasis. Most MMP's are secreted as inactive proproteins which are activated when cleaved by extracellular proteinases. However, the protein encoded by this gene is a member of the membrane-type MMP (MT-MMP) subfamily; each member of this subfamily contains a potential transmembrane domain suggesting that these proteins are expressed at the cell surface rather than secreted. This protein activates MMP2 protein, and this activity may be involved in tumor invasion.

Recommended Dilutions

WB	1:500 - 1:1000
IF/ICC	1:50 - 1:200

Immunogen Information

Gene ID

4323

Swiss Prot

P50281

Immunogen

Recombinant Protein corresponding to a sequence within amino acids 21-538 of human MMP14 (NP_004986.1).

Synonyms

MMP-14; MMP-X1; MT-MMP; MT1MMP; MTMMP1; WNCHRS; MT1-MMP; MT-MMP 1

Contact

☎ | 400-999-6126

✉ | cn.market@abclonal.com.cn

🌐 | www.abclonal.com.cn

Product Information

Source

Rabbit

Isotype

IgG

Purification

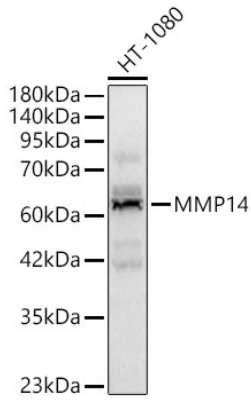
Affinity purification

Storage

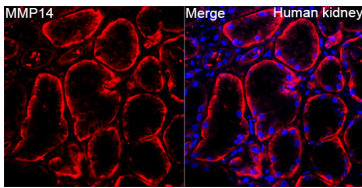
Store at -20°C. Avoid freeze / thaw cycles.

Buffer: PBS with 0.05% proclin300, 50% glycerol, pH7.3.

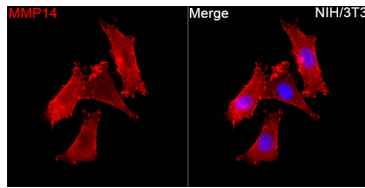
Validation Data



Western blot analysis of lysates from HT-1080 cells using MMP14 Rabbit pAb(A25497) at 1:1000 dilution. Secondary antibody:HRP Goat Anti-Rabbit IgG (H+L)(AS014) at 1:10000 dilution. Lysates/proteins: 25 µg per lane. Blocking buffer: 3% nonfat dry milk in TBST. Detection:ECL Basic Kit (RM00020). Exposure time:30s.



Immunofluorescence analysis of paraffin-embedded Human kidney tissue using MMP14 Rabbit pAb(A25497) at a dilution of 1:100 (40x lens). Secondary antibody: Cy3 Goat Anti-Rabbit IgG (H+L)(AS007) at 1:500 dilution. Blue: DAPI for nuclear staining. Perform high pressure antigen retrieval with 0.01 M citrate buffer (pH 6.0) prior to IF staining.



Immunofluorescence analysis of NIH/3T3 cells using MMP14 Rabbit pAb(A25497) at a dilution of 1:100 (40x lens). Secondary antibody: Cy3 Goat Anti-Rabbit IgG (H+L)(AS007) at 1:500 dilution. Blue: DAPI for nuclear staining.