

# GM-CSF Rabbit mAb

Catalog No.: A25503 **Recombinant**

## Basic Information

### Observed MW

45-60kDa

### Calculated MW

17kDa

### Category

Primary antibody

### Applications

WB,ELISA

### Cross-Reactivity

Rat

### CloneNo number

ARC64162

## Background

Enables cytokine activity. Involved in several processes, including cellular response to lipopolysaccharide; macrophage activation; and response to silicon dioxide. Located in extracellular space. Used to study Parkinsonism and myocardial infarction. Biomarker of abdominal aortic aneurysm; interstitial cystitis; and lung disease (multiple). Human ortholog(s) of this gene implicated in acute myeloid leukemia; juvenile myelomonocytic leukemia; neutropenia; pulmonary alveolar proteinosis; and visceral leishmaniasis. Orthologous to human CSF2 (colony stimulating factor 2).

## Recommended Dilutions

**WB** 1:1000 - 1:4000

**ELISA** Recommended starting concentration is 1 µg/mL. Please optimize the concentration based on your specific assay requirements.

## Immunogen Information

### Gene ID

116630

### Swiss Prot

P48750

### Immunogen

Recombinant fusion protein containing a sequence corresponding to amino acids 20-144 of rat GM-CSF (NP\_446304.1).

### Synonyms

Gmcsf; Gm-csf

## Contact

☎ | 400-999-6126

✉ | [cn.market@abclonal.com.cn](mailto:cn.market@abclonal.com.cn)

🌐 | [www.abclonal.com.cn](http://www.abclonal.com.cn)

## Product Information

### Source

Rabbit

### Isotype

IgG

### Purification

Affinity purification

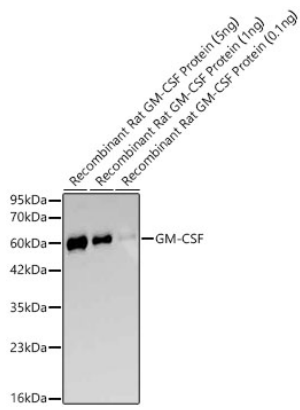
### Storage

Store at -20°C. Avoid freeze / thaw cycles.

Buffer: PBS with 0.05% proclin300,0.05% BSA,50% glycerol,pH7.3.

## Validation Data

---



Western blot analysis of recombinant Rat GM-CSF Protein using GM-CSF Rabbit mAb (A25503) at 1:1000 dilution.

Secondary antibody: HRP-conjugated Goat anti-Rabbit IgG (H+L) (AS014) at 1:10000 dilution.

Lysates/proteins: 5 ng/1 ng/0.1 ng per lane.

Blocking buffer: 3% nonfat dry milk in TBST.

Detection: ECL Basic Kit (RM00020).

Exposure time: 45s.