

eRF3A/GSPT1 Rabbit mAb

Catalog No.: A25506 **Recombinant**

Basic Information

Observed MW

80kDa

Calculated MW

56kDa

Category

Primary antibody

Applications

WB,IF/ICC,IF-P,IHC-P,ELISA

Cross-Reactivity

Human, Rat

CloneNo number

ARC66181

Background

Enables translation release factor activity. Involved in regulation of translational termination. Acts upstream of or within protein methylation. Predicted to be located in cytosol. Predicted to be part of translation release factor complex.

Recommended Dilutions

WB	1:10000 - 1:60000
IF/ICC	1:200 - 1:800
IF-P	1:200 - 1:800
IHC-P	1:500 - 1:2000
ELISA	Recommended starting concentration is 1 µg/mL. Please optimize the concentration based on your specific assay requirements.

Contact

	400-999-6126
	cn.market@abclonal.com.cn
	www.abclonal.com.cn

Immunogen Information

Gene ID

2935

Swiss Prot

P15170

Immunogen

Synthetic peptide. This information is considered to be commercially sensitive.

Synonyms

GST1; ETF3A; eRF3a; 551G9.2

Product Information

Source

Rabbit

Isotype

IgG

Purification

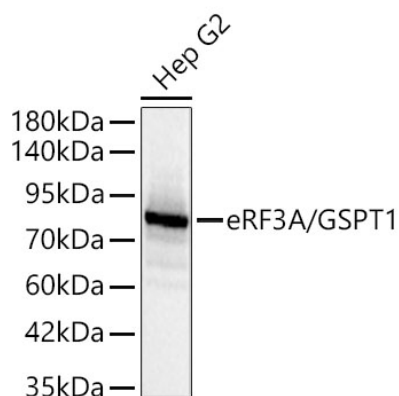
Affinity purification

Storage

Store at -20°C. Avoid freeze / thaw cycles.

Buffer: PBS containing 50% glycerol and 0.05% BSA, preserved with proclin300 or sodium azide (as specified on the Certificate of Analysis), pH 7.3.

Validation Data



Western blot analysis of lysates from Hep G2 cells using eRF3A/GSPT1 Rabbit mAb (A25506) at 1:10000 dilution.

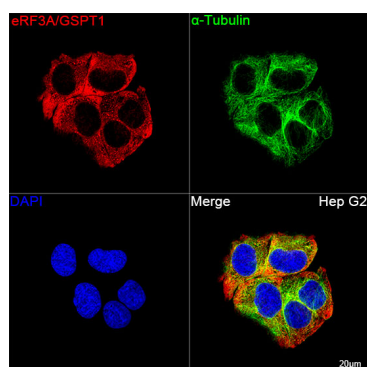
Secondary antibody: HRP-conjugated Goat anti-Rabbit IgG (H+L) (AS014) at 1:10000 dilution.

Lysates/proteins: 25 µg per lane.

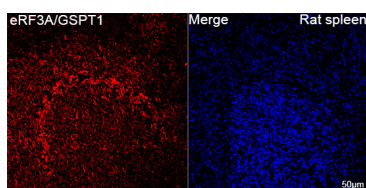
Blocking buffer: 3% nonfat dry milk in TBST.

Detection: ECL Basic Kit (RM00020).

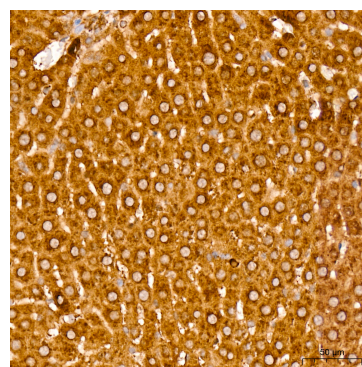
Exposure time: 1s.



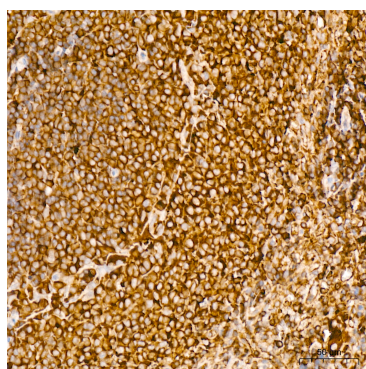
Confocal imaging of Hep G2 cells using eRF3A/GSPT1 Rabbit mAb (A25506, dilution 1:200) followed by a further incubation with Cy3 Goat Anti-Rabbit IgG (H+L) (AS007, dilution 1:500) (Red). The cells were counterstained with α-Tubulin Mouse mAb (AC012, dilution 1:400) followed by incubation with ABflo® 488-conjugated Goat Anti-Mouse IgG (H+L) Ab (AS076, dilution 1:500) (Green). DAPI was used for nuclear staining (Blue). Objective: 100x.



Confocal imaging of paraffin-embedded Rat spleen tissue using eRF3A/GSPT1 Rabbit mAb (A25506, dilution 1:200) followed by a further incubation with Cy3 Goat Anti-Rabbit IgG (H+L) (AS007, dilution 1:500) (Red). DAPI was used for nuclear staining (Blue). Objective: 40x. Perform high pressure antigen retrieval with 0.01 M citrate buffer (pH 6.0) prior to IF staining.



Immunohistochemistry analysis of paraffin-embedded Rat liver tissue using eRF3A/GSPT1 Rabbit mAb (A25506) at a dilution of 1:800 (40x lens). High pressure antigen retrieval was performed with 0.01 M citrate buffer (pH 6.0) prior to IHC staining.



Immunohistochemistry analysis of paraffin-embedded Rat spleen tissue using eRF3A/GSPT1 Rabbit mAb (A25506) at a dilution of 1:800 (40x lens). High pressure antigen retrieval was performed with 0.01 M citrate buffer (pH 6.0) prior to IHC staining.