

IL-13 Rabbit mAb

Catalog No.: A25512 **Recombinant**

Basic Information

Observed MW

Refer to figures

Calculated MW

14kDa

Category

Primary antibody

Applications

FC (intra),ELISA

Cross-Reactivity

Mouse

CloneNo number

ARC64322

Background

Predicted to enable interleukin-13 receptor binding activity. Involved in positive regulation of cold-induced thermogenesis and positive regulation of macrophage activation. Acts upstream of or within cellular response to cytokine stimulus; inflammatory response; and positive regulation of immune effector process. Located in cytoplasm; external side of plasma membrane; and extracellular space. Is expressed in gut; liver; male reproductive gland or organ; and thymus. Used to study atopic dermatitis. Human ortholog(s) of this gene implicated in several diseases, including allergic disease (multiple); autoimmune disease (multiple); diffuse scleroderma; lung disease (multiple); and nose disease (multiple). Orthologous to human IL13 (interleukin 13).

Recommended Dilutions

FC (intra) 1:500 - 1:1000

ELISA Recommended starting concentration is 1 µg/mL. Please optimize the concentration based on your specific assay requirements.

Immunogen Information

Gene ID

16163

Swiss Prot

P20109

Immunogen

Recombinant fusion protein containing a sequence corresponding to amino acids 20-131 of mouse IL-13 (NP_032381.1).

Synonyms

IL-13

Contact

☎ | 400-999-6126

✉ | cn.market@abclonal.com.cn

🌐 | www.abclonal.com.cn

Product Information

Source

Rabbit

Isotype

IgG

Purification

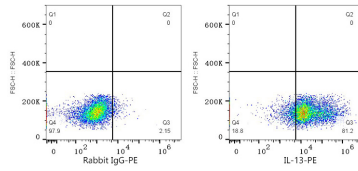
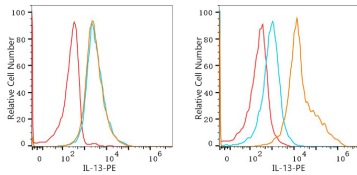
Affinity purification

Storage

Store at -20°C. Avoid freeze / thaw cycles.

Buffer: PBS with 0.05% proclin300,0.05% BSA,50% glycerol,pH7.3.

Validation Data



Flow cytometry: 1×10^6 CHO cells (negative control, left) and CHO (Transfection) cells were intracellularly-stained with IL-13 Rabbit mAb (A25512, 2 $\mu\text{g}/\text{mL}$, orange line) or PE Rabbit IgG isotype control (A24172, 5 $\mu\text{g}/\text{Test}$, blue line), followed by PE Donkey anti-Rabbit pAb staining. Non-fluorescently stained cells were used as blank control (red line).

Flow cytometry: 1×10^6 CHO (Transfection) cells were intracellularly-stained with PE Rabbit IgG isotype control (A24172, 5 $\mu\text{g}/\text{Test}$, left) or IL-13 Rabbit mAb (A25512, 2 $\mu\text{g}/\text{mL}$, right).